

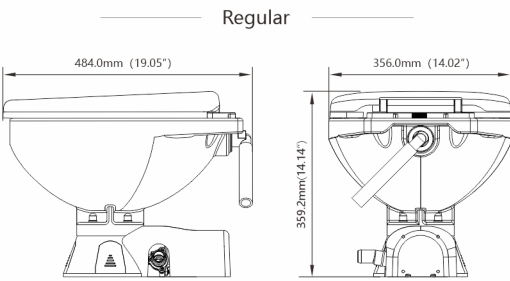
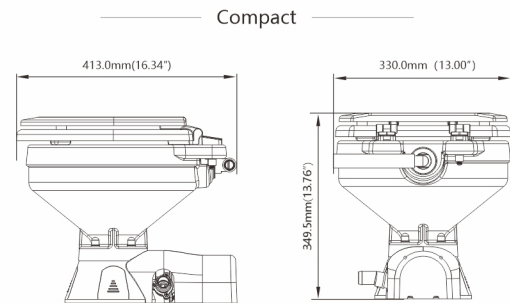
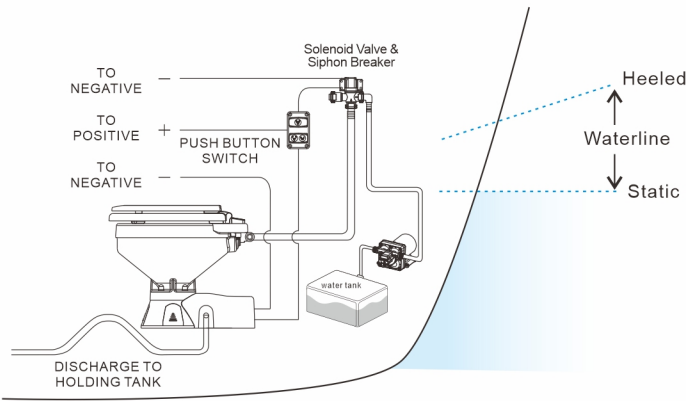


QUIET FLUSH ELECTRIC TOILET

Designed to radically reduce noise levels, Quiet Flush Toilets make life onboard more comfortable for all crew members, even those sleeping! Can be connected to the vessel's existing pressurized water system for flushing with fresh water. Very quiet flush cycle, one-touch button to solve your sewage troubles.

FEATURES & BENEFITS

- Very quiet flush cycle - like a household toilet
- Single button flush actuator - with dual function water level control switch
- Can be plumbed to any pressurized water system that can provide a 3-1/2 GPM (13.5 LPM) flow rate
- Water control solenoid valve with anti-siphon breaker to prevent contamination of potable water supply
- White vitreous china bowl available in compact or comfortable household size
- Built in upgraded macerator pump makes flushing quieter
- All spare parts can be ordered individually
- All corrosion resistant material for marine use



Bowl Can Be Rotated 90° For Mounting In Confined Spaces
Soft Close Seat Regular Only

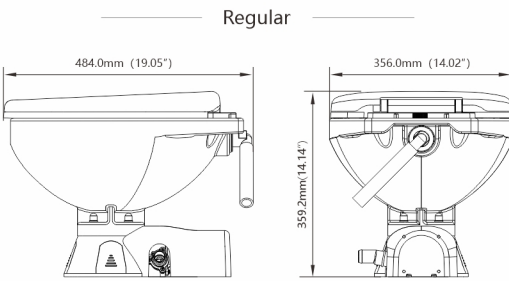
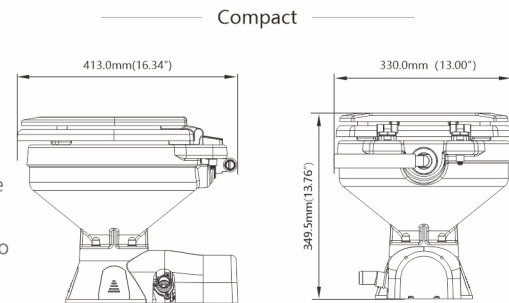
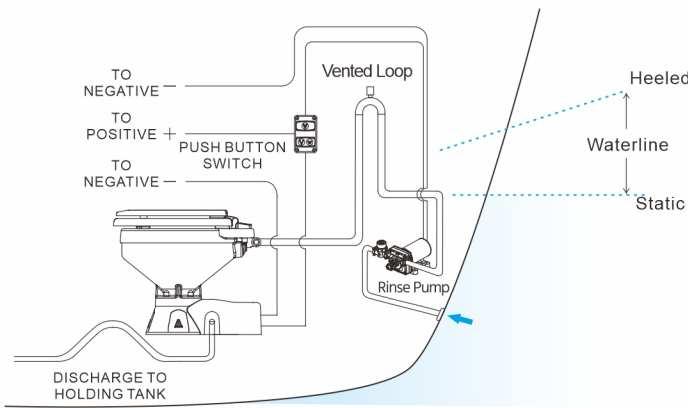
Model	Voltage	Max Draw	port	Size	Material	Features	Dimension(L*W*H)
SFMTE1-03	12V	16A	Inlet 3/4" Hose Barb Outlet 1" Hose Barb	Compact	Ceramic bowl, wood seat with baked enamel finish	Built in macerator	450X385X410mm 17.72"x15.16"x16.14"
SFMTE2-03	24V	8A		Regular	Ceramic bowl, soft close seat		545X430X420mm 21.45"x16.93"x16.53"
SFMTE1-03-R	12V	16A					
SFMTE2-03-R	24V	8A					

QUIET FLUSH ELECTRIC TOILET

Designed to radically reduce noise levels, Quiet Flush Toilets make life onboard more comfortable for all crew members, even those sleeping! Can be connected to the vessel's existing pressurized water system for flushing with fresh water. Very quiet flush cycle, available in regular and compact versions, water control solenoid valve with anti-siphon breaker to prevent contamination of the potable water supply. Equipped with a powerful sewage pump to break down waste and empty the toilet. With the one-button button on the switch panel, you can solve your sewage troubles.

FEATURES & BENEFITS

- Very quiet flush cycle - like a household toilet
- Single button flush actuator - with dual function water level control switch
- Supplied with SEAFLO seawater rinse pump to provide sea water or lake water to rinse the toilet bowl
- White vitreous china bowl available in compact or comfortable household size
- Built in upgraded macerator pump makes flushing quieter
- All spare parts can be ordered individually
- All corrosion resistant material for marine use



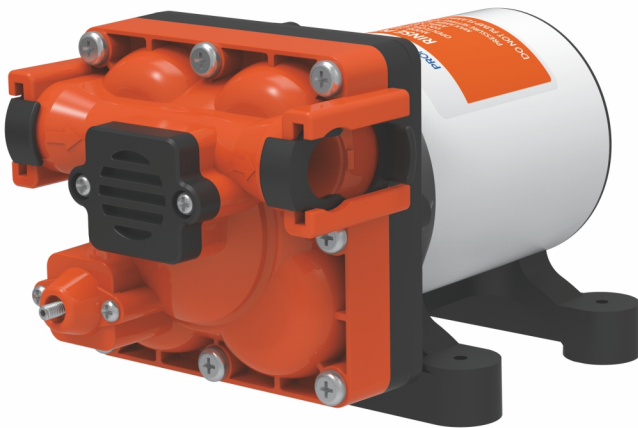
Bowl Can Be Rotated 90° For Mounting In Confined Spaces
Soft Close Seat Regular Only

Model	Voltage	Max Draw	port	Size	Material	Features	Dimension(L*W*H)
SFMTE1-04	12V	16A	Inlet 3/4" Hose Barb Outlet 1" Hose Barb	Compact	Ceramic bowl, wood seat with baked enamel finish	Built in macerator	450X385X410mm 17.72"x15.16"x16.14"
SFMTE2-04	24V	8A		Regular	Ceramic bowl, soft close seat		545X430X420mm 21.45"x16.93"x16.53"
SFMTE1-04-R	12V	16A					
SFMTE2-04-R	24V	8A					

RINSE PUMP FOR MARINE TOILETS

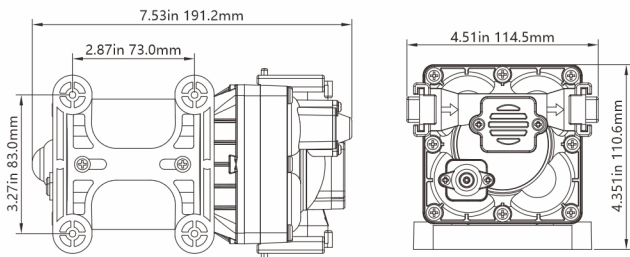
FEATURES & BENEFITS

- It is the standard spare part of SEAFLO quiet flush electric toilet - flushing pump
- Self priming, strong suction, suction lift up to 1.8m
- Run dry safe, max flow can reach 4.0gpm/15.0lpm
- Multiple sizes of quick-connect fittings and filters are available for easy connection to any outlet
- Quiet operation, bypass technology reduces cycling and reduces noise
- Semi-rigid rubber feet for noise reduction from vibration



STANDARD PUMP CONFIGURATIONS

Model	Voltage	GPM/LPM	PSI/BAR	Max Draw	Valves
SFDP1-040-050-43	12 V	4.0/15.0	50/3.45	13 A	EPDM
SFDP2-040-050-43	24 V	4.0/15.0	50/3.45	7 A	EPDM

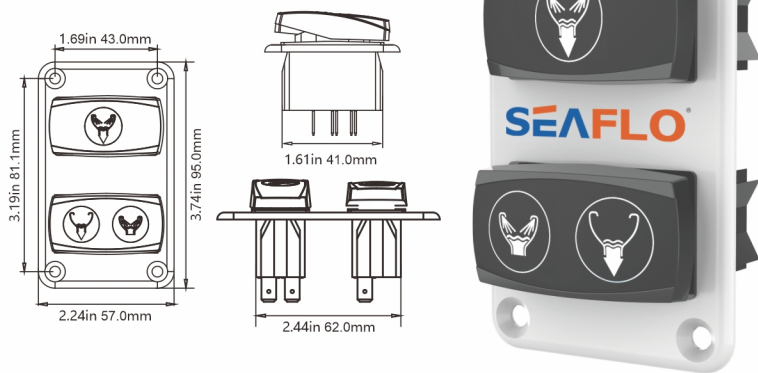


SWITCH PANEL

FEATURES & BENEFITS

- Genuine SEAFLO spare parts for quite flush electric toilet.
- Switch control panel 12/24V for electric toilet.
- Three-way control panel allows the operator to select a normal flush and drain cycle, or to lower or raise the water level.

Model	Voltage	Fuel	Dimension
SFSP-015-03	12 V&24 V	15 A	95 x 57 mm

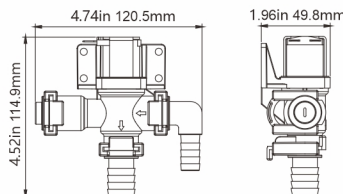


SOLENOID VALVE & SIPHON BREAKER

FEATURES & BENEFITS

SEAFLO solenoid valve and syphon breaker assembly for connection to any existing pressurised water system capable of delivering 2.9gpm (11lpm) or more. The syphon breaker ensures that there is no backflow from the toilet into the water system.

Model	Voltage	Power	Pressure
SFSV1-01	12V	9W	1-150 PSI
SFSV2-01	24V	9W	3-150 PSI



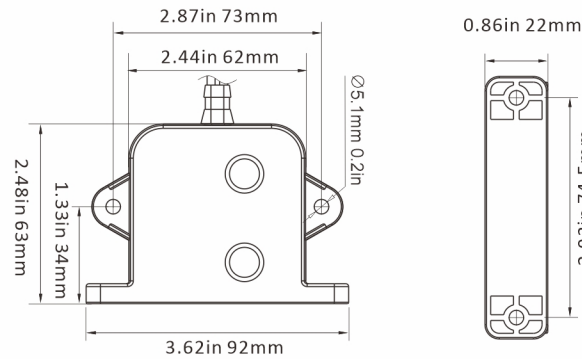
ELECTRIC FIELD BILGE SWITCH

This SEAFLO electric field sensor senses water level and automatically controls a 12 or 24 volt bilge pump. The switch turns on when it senses 41mm (1.6") water level and turns off when water is below 9.5mm (0.37"). This product is designed for use in pleasure boat applications, and is not intended to be used in commercial marine & boating applications or for any other use.

FEATURES & BENEFITS

- Ideal for use with electric bilge pump
- Rated to handle pumps up to 20A at 12V or 10A at 24V
- No moving parts, totally sealed solid state electronics and field detectors
- No exposed sensors eliminate corrosion possibilities
- Activates at a 41mm (1.6") fluid level and deactivates at a 9.5 mm (0.37") fluid level
- A three second delay prevents false starts from water sloshing in the bilge
- Easy to install, mounted on either horizontal or vertical surface (e.g. bulkhead or hull)

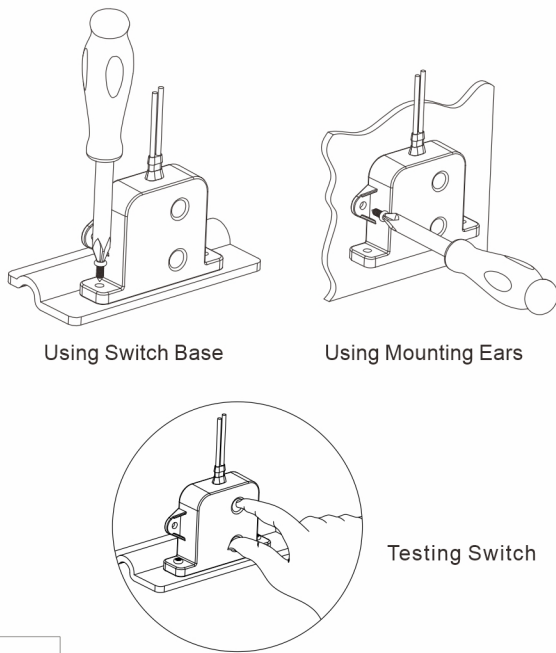
INSTALLATION DIMENSION DRAWING



STANDARD PUMP CONFIGURATIONS

Model Number	Voltage	Current	Wire Gauge Size /length	N.W.
SFBS-20-06	12V/24V DC	20A at 12V or 10A at 24V	16AWG/1000mm	0.1KG

NEW



SEAFLO Float Switch

SEAFLO Submersible Bilge Pump

NEW



NEW

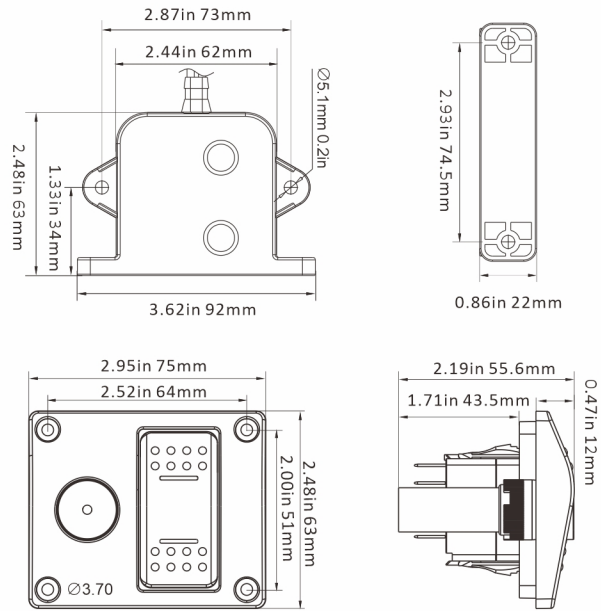


ALARM CONTROL SYSTEM

FEATURES & BENEFITS

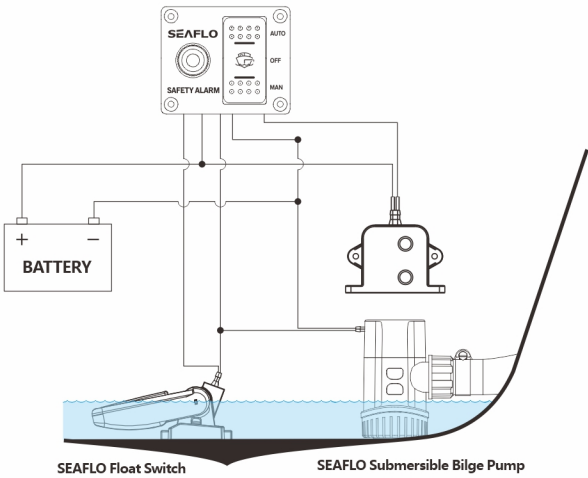
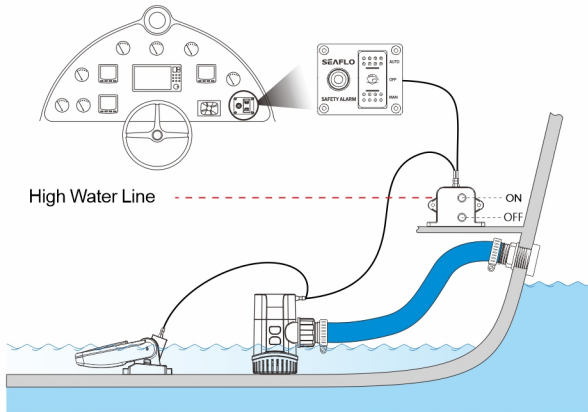
- Detects water and sends a signal (3 seconds delay) to the alarm and switch
- Electric field bilge Switch is rated to handle all SEAFLO Bilge pumps up to 20 amps at 12V and 10 amps at 24V
- Switch activates the Bilge Pump at a 41mm/1.6" fluid level and deactivates at a 9.5mm/0.37" fluid level
- 3 second delay prevents false starts
- Totally sealed fluid detector is never in contact with water, will not corrode and is not affected by oil or debris

INSTALLATION DIMENSION DRAWING



STANDARD PUMP CONFIGURATIONS

Model Number	Voltage	Current	Alarm volume	N.W.	Wire Gauge Size /length
SFwas1-20-03	12V DC	20 Amps. Max	≥85DB	0.2KG	16AWG/1000mm (Bilge Switch)
SFwas2-10-03	24V DC	10 Amps. Max	≥85DB	0.2KG	16AWG/100mm (Alarm Switch)

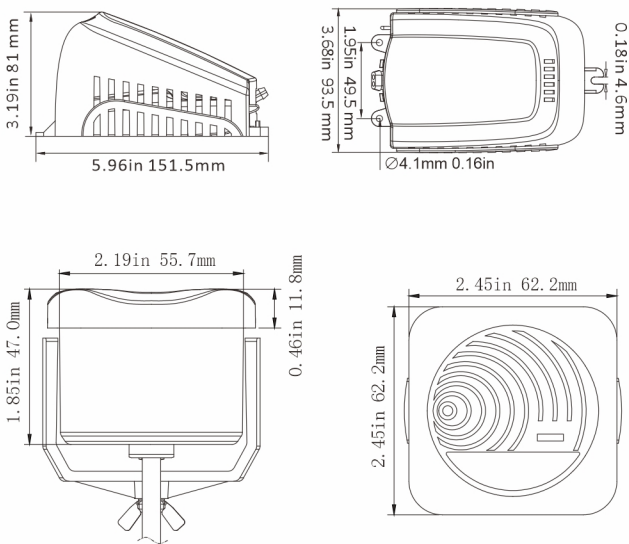


HIGH WATER BILGE ALARM

FEATURES & BENEFITS

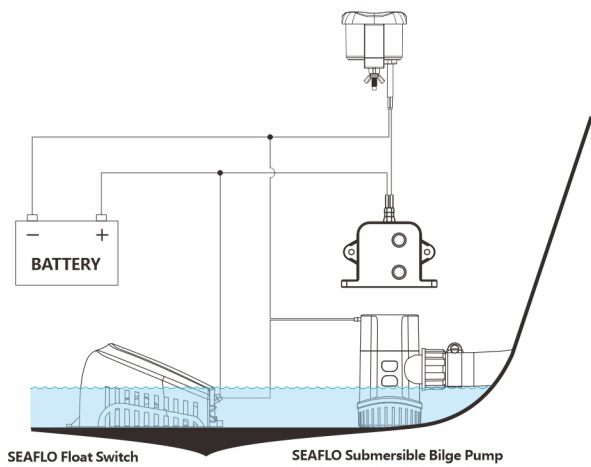
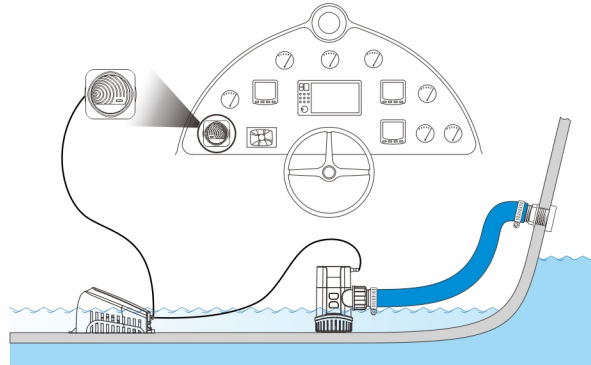
- A safety reminder device integrating vision and hearing
- Consists of a float switch and a 95 DB alarm
- Allows an unarmed compartment to be constantly monitored
- Rated to handle pumps up to 20A at 12V or 10A at 24V
- Turn on when water level higher than 45-55mm(1.77"-1.97")
Turn off when water level lower than 20-25mm(0.79"-0.98")
- The float switch comes with a filter housing to keep debris out

INSTALLATION DIMENSION DRAWING



STANDARD PUMP CONFIGURATIONS

Model Number	Voltage	Current	Alarm volume	N.W.	Wire Gauge Size /length
SFwas1-20-02	12V DC	20 Amps. Max	≥95DB	0.3KG	16AWG/1000mm (Switch)
SFwas2-10-02	24V DC	10 Amps. Max	≥95DB	0.3KG	28AWG/150mm (Alarm)



NEW

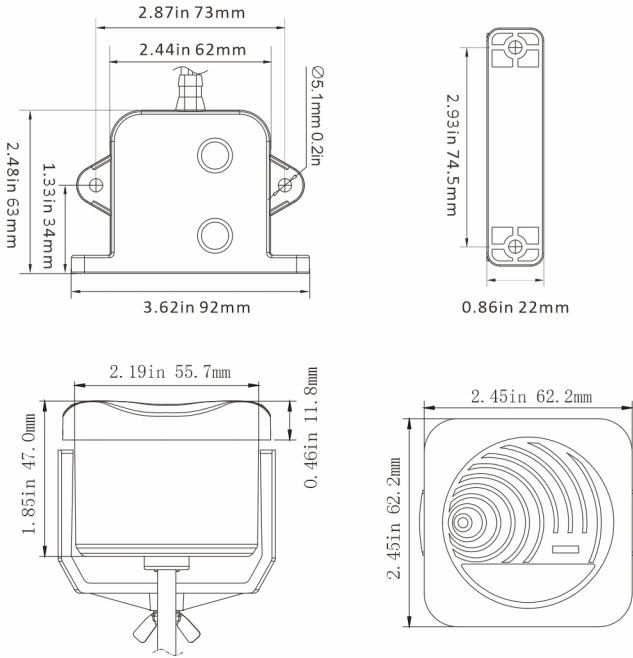


WATER LEVEL ALARM SYSTEM

FEATURES & BENEFITS

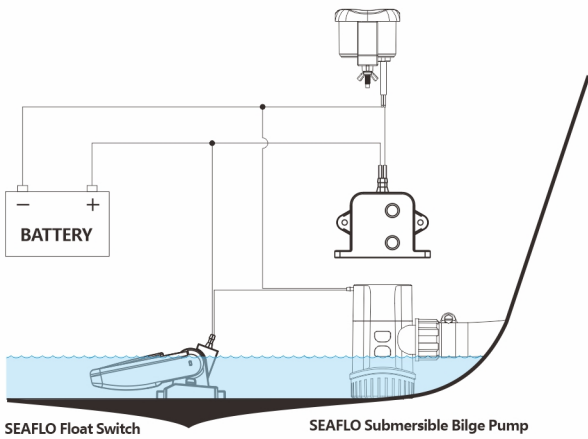
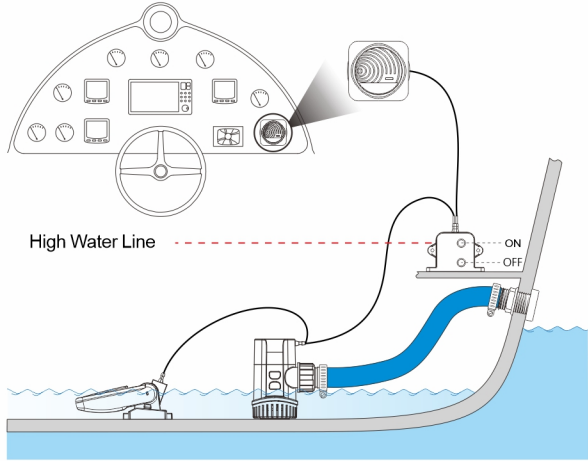
- Consists of an electric field bilge switch and a 95 dB alarm
- Detects water and sends a signal (3 seconds delay) to the alarm
- Switch activates the Bilge Pump at a 41mm/1.6" fluid level and deactivates at a 9.5mm/0.37" fluid level
- 3 second delay prevents false starts
- Precision switch automatically activates and shuts off alarms when water reaches specific levels
- No moving parts, totally sealed solid state electronics and field detectors

INSTALLATION DIMENSION DRAWING



STANDARD PUMP CONFIGURATIONS

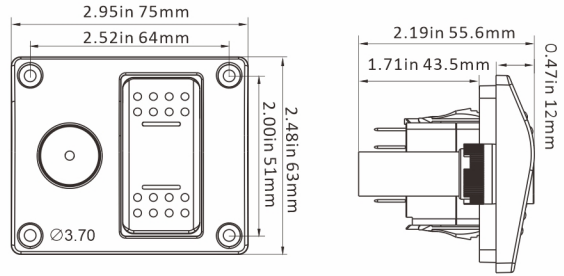
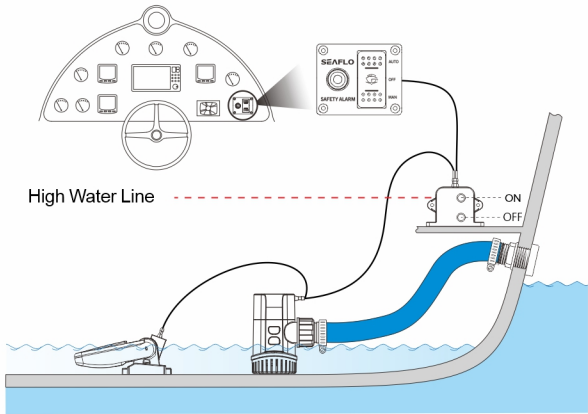
Model Number	Voltage	Current	Alarm volume	N.W.	Wire Gauge Size /length
SFWAS1-20-01	12V DC	20 Amps. Max	≥95DB	0.2KG	18AWG/1000mm (Switch) 28AWG/150mm (Alarm)
SFWAS2-10-01	24V DC	10 Amps. Max	≥95DB	0.2KG	



ALARM SWITCH PANEL

FEATURES & BENEFITS

- For use with seaflo electric field bilge switch, precise operation ensures proper bilge pumping and provides peace of mind
- Controls any pump equipped with an automatic float switch
- Unique 3-way switch disables piezo alarm while keeping warning LED lit
- Three way rocker switch allows alarm to be auto, turned off and man (AUTO-OFF-MAN)
- Marine switch panel, easy to install

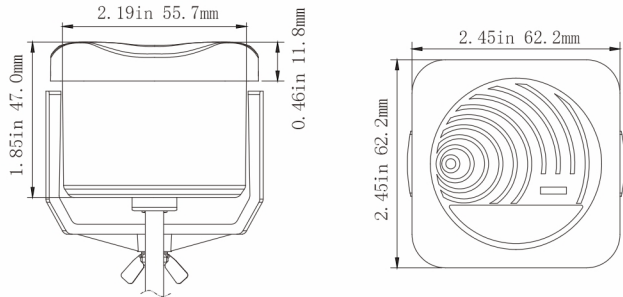


STANDARD PUMP CONFIGURATIONS

Model Number	Voltage	Current	Wire Gauge Size /length	Alarm volume	N.W.
SFASP1-01	12V DC	20 Amps. Max	16AWG/100mm	≥85DB	0.2KG
SFASP2-01	24V DC	10 Amps. Max	16AWG/100mm	≥85DB	0.2KG

WATER ALARM

A safety reminder device integrating vision and hearing
Allows an unarmed compartment to be constantly monitored



STANDARD PUMP CONFIGURATIONS

Model Number	Voltage	Current	Wire Gauge Size /length	Alarm volume	N.W.
SFWA1-01	12V DC	20 Amps. Max	28AWG/150mm	≥95DB	0.1KG
SFWA2-01	24V DC	10 Amps. Max	28AWG/150mm	≥95DB	0.1KG

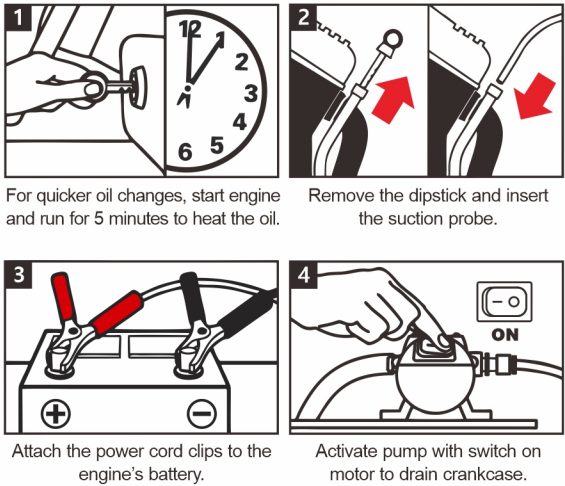


OIL CHANGE SYSTEM

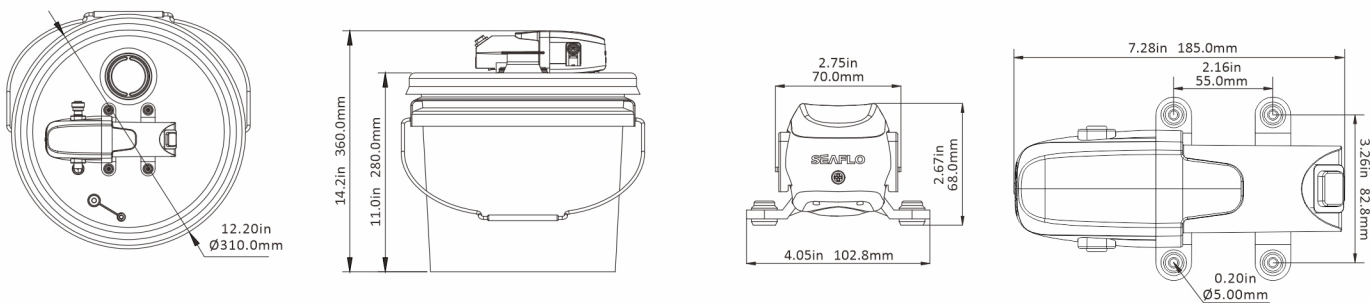
SEAFLO oil change system includes premium pump with 6 feet (1.8m) cables, battery clips, hose kit and 3.7 gallon (14 L) storage bucket. Incorporating SEAFLO advanced motor technology that includes thermal overload protection, this Oil Change System is self-priming, easy to install and extremely versatile. System simplifies the engine oil changing process, perfect for changing engine oil in Boats, RV's, Lawn and Garden Equipment.

FEATURES & BENEFITS

- Self-contained oil change system
- Self-priming up to 5 feet (1.5m), run dry capable pump, thermal overload protection
- Battery clamp leads and on-off switch to make pumping process quick and simple
- Secured fully assembled 3.7 gallon (14 L) pail prevents wobble and spillage
- Vent hole can prevent the barrel from expanding and unable to pump oil
- Drain Spout for easy pouring
- No spilling and very portable, easy to empty and easy to carry
- Easy to operate - four easy steps to fast, clean oil



INSTALLATION DIMENSION DRAWING



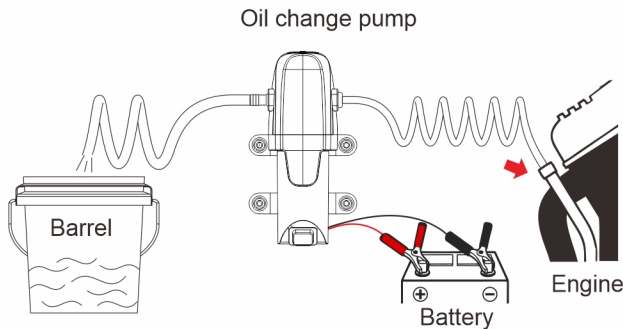
STANDARD PUMP CONFIGURATIONS

Model Number	Voltage	Amp Draw	Fuse Size	Open Flow	Battery Leads	Suction Tube	Weight
SFOCS1-015-01	12V DC	2A	5A	1.5GPM/5.6LPM	6.6ft / 2m	8ft / 2.4m	3.7lbs / 1.69kg

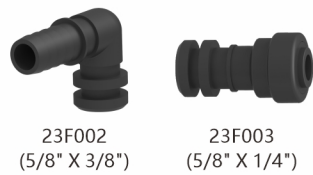
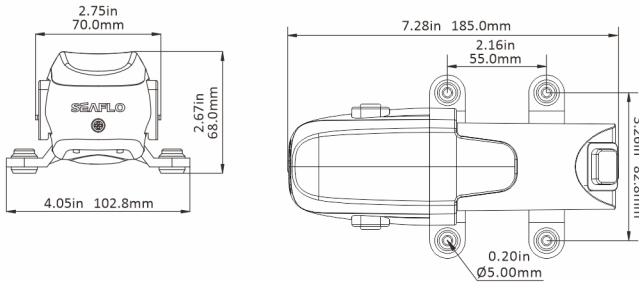
OIL CHANGE SYSTEM

FEATURES & BENEFITS

- Self-contained oil change system
- Self-priming up to 5 feet (1.5m), run dry capable pump, thermal overload protection
- Battery clamp leads and on-off switch to make pumping process quick and simple
- 8 feet(2.4m) , oil & heat resistant 1/4 inch suction tube
- 6.6 feet (2m) battery leads with alligator clips
- With 3 m of 10/14 mm (inner/outer diameter) transparent PU tube
- Very portable and easy to carry
- Perfect for changing engine oil in Boats, RV's, Lawn and Garden Equipment
- Easy to operate - four easy steps to fast, clean oil
- Perfect for changing engine oil in Boats, RV's, Lawn and Garden Equipment.



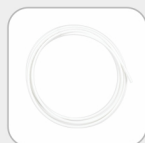
INSTALLATION DIMENSION DRAWING



Optional Accessories

STANDARD PUMP CONFIGURATIONS

Model Number	Voltage	Amp Draw	Fuse Size	Open Flow	Dimension(L*W*H)
SFOCS1-015-02	12V DC	2A	5A	1.5GPM/5.6LPM	185x103x68 mm



20 ft (6.0m) of 1/4" (6.35mm) discharge tube



7/16" 24 UNS thread to 1/4" quick attach



Wall power transformer



Part No.: SFWBS-02 Carbon Block Cartridge (optional)

Bottled Water System

FEATURES & BENEFITS

- Exquisite appearance and compact size.
- Sensing water level by chip, which is more sensitive, and the water can be pumped drier.
- Electronic buttons have a longer life than mechanical buttons.
- Suction wand can be connected as many units as you want.
- The material of wet parts meet FDA standards to ensure safety.
- Long life motor, quiet operation and built-in over load protection.

PUMP

Max Pressure:
40 PSI (2.7 bar)
Max flow rate:
1.0 GPM (3.8 LPM)
Dimensions:
3.0"H x 5.1"W x 7.7"D
(76.5 mm H x 130 mm W x 195.5 mm D)
Voltages:
Pump: 12V DC
Transformer: 110VAC - 240VAC, 50/60 Hz

Amp Draw of Pump:
2.0A MAX
Size of package:
600 mm x 220 mm X 85 mm
Weight:
4.5 lbs. (2.04 kg)

APPLICATIONS



Refrigerator, Ice Maker



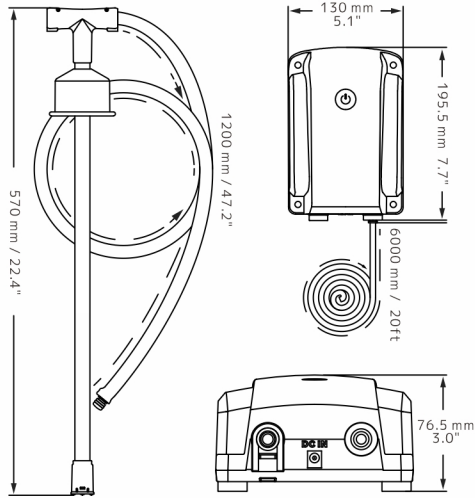
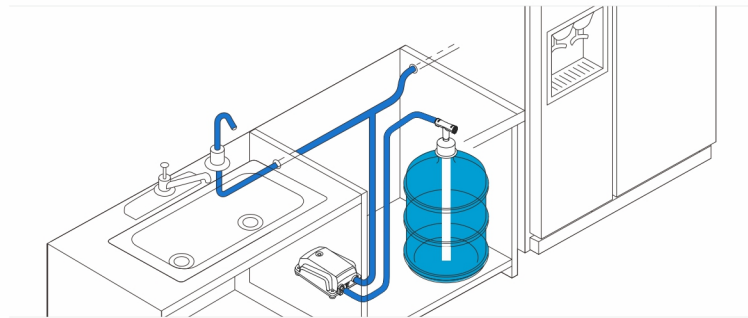
Coffee Maker



Boiling Water Machine



Drinking Water Faucet

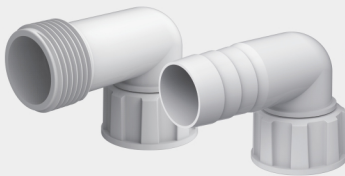


MODEL

Model Number	Transformer Voltage	GPM/LPM	PSI/BAR	Max Amp	Suction Wand	Carbon Block Cartridge
SFBWS-010-040-01	110VAC - 240VAC	1.0/3.7	40/2.76	2.0A	single, dual, or more	Optional

Consult us for other available models, configurations, valve and diaphragm materials.

NEW



Elbow Fitting
1-1/8" (29mm)



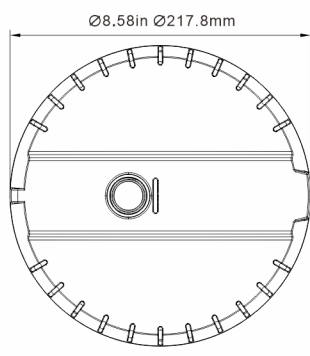
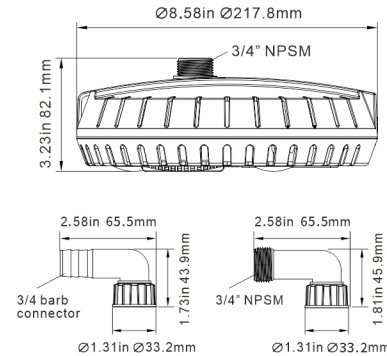
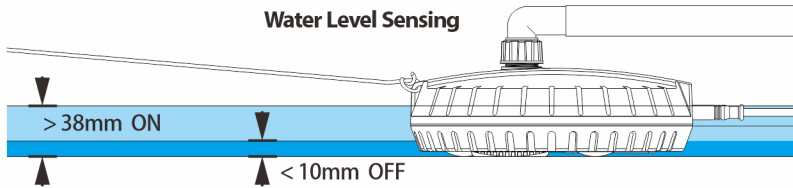
POOL COVER PUMP

FEATURES & BENEFITS

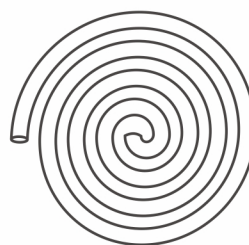
- Unique flying-object shape to easily reach the middle of the pool cover.
- IC chip to turn on and off, which is more sensitive and accurate.
- Innovative vent valve design to solve air trap.
- Removable strainer to minimize clogging and easily clean.
- Low center of gravity to protect from tilting during operation.
- Auto on activates when water at, or above 3.8cm (1.5") has been detected.
- Auto off activates when water at, or below 1cm (2/5") has been detected.



Rotation Function



25ft / 7.6m nylon rope



16ft / 5.0m PVC hose

STANDARD PUMP CONFIGURATIONS

Pump Model	Voltage	Max Flow Rate	Rate Power	Max Head	Outlet Dia.	Cable Length	Weight
SFPCP-G1000-01A	115/230 VAC (50/60 Hz)	63LPM/1000GPH	51W	4m	3/4" NPSM	7.6m (25ft)	3.5 lbs (1.6 kg)
SFPCP-G1000-01B	12VDC	63LPM/1000GPH	51W	4m	3/4" NPSM	Not include	



Standard Straight Fitting
1" (25mm) or
1-1/8" (29mm)



NEW

Color Box

Blister



Blister

Color Box



NEW

Standard Straight Fitting
1" (25mm) or
1-1/8" (29mm)



NON-AUTOMATIC BILGE PUMPS 13A SERIES

FEATURES & BENEFITS

- CE, RoHS, ISO 8846, ISO8849 standards
- Includes check valve to prevent water back flow
- Include removable discharge straight fitting
- Submersible and ignition protected
- High efficiency, low amp motor
- Stainless-steel motor shaft
- Anti-Airlock protection

Split quick-connect joint design no need to disconnect base or plumbing when replacing pump.

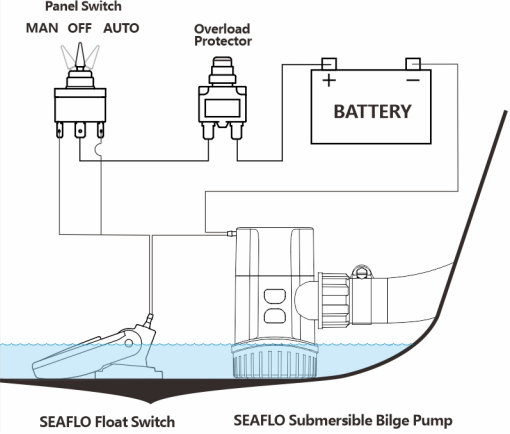


Optional Accessories
1-1/8" (29mm)



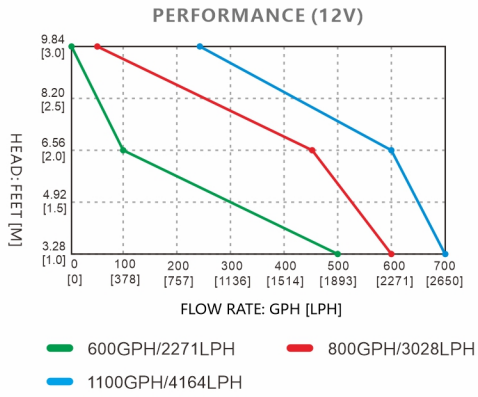
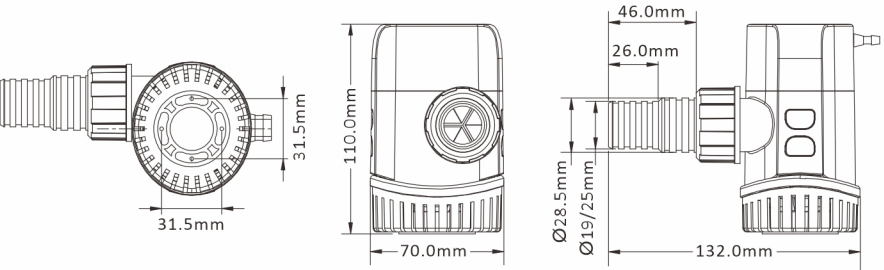
Rotation Function

Motor can be sold separately



SEAFLO Float Switch

SEAFLO Submersible Bilge Pump



STANDARD PUMP CONFIGURATIONS

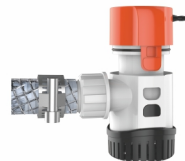
Pump Model	Motor Model	Flow rate	Volts	Current	Head	Wire Lead	Outlet Dia.	N.W./G.W.
SFBP1-G600-13A	SFMA1-G600-13A	600GPH	12V	2.5A	2.5m/7.5ft	3' (1 m)		0.40KG/0.47KG
SFBP2-G600-13A	SFMA2-G600-13A	600GPH	24V	1.5A	2.5m/7.5ft	3' (1 m)	3/4" (19mm)	0.40KG/0.47KG
SFBP1-G800-13A	SFMA1-G800-13A	800GPH	12V	3.5A	3m/9ft	3' (1 m)	1 1/8" (29mm)	0.40KG/0.47KG
SFBP2-G800-13A	SFMA2-G800-13A	800GPH	24V	2.0A	3m/9ft	3' (1 m)		0.40KG/0.47KG
SFBP1-G1100-13A	SFMA1-G1100-13A	1100GPH	12V	4.0A	4m/12ft	3' (1 m)	1" (25mm)	0.40KG/0.47KG
SFBP2-G1100-13A	SFMA2-G1100-13A	1100GPH	24V	2.5A	4m/12ft	3' (1 m)	1 1/8" (29mm)	0.40KG/0.47KG

ELECTRONIC TIMER SENSING AUTO BILGE PUMPS 13B SERIES

FEATURES & BENEFITS

- Compact automatic pump-no float switch needed
- Check for water every 2.5 minutes, Runs for a half second
- CE, RoHS, ISO 8846, ISO8849 standards
- Submersible and ignition protected
- High efficiency, low amp motor
- Stainless-steel motor shaft
- Includes check valve to prevent water back flow
- Include removable discharge straight fitting

Split quick-connect joint design no need to disconnect base or plumbing when replacing pump.



Optional Accessories
1-1/8" (29mm)

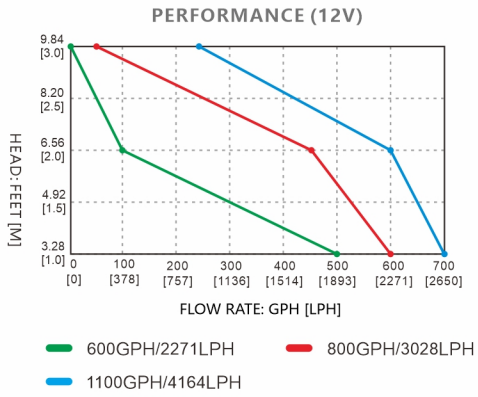
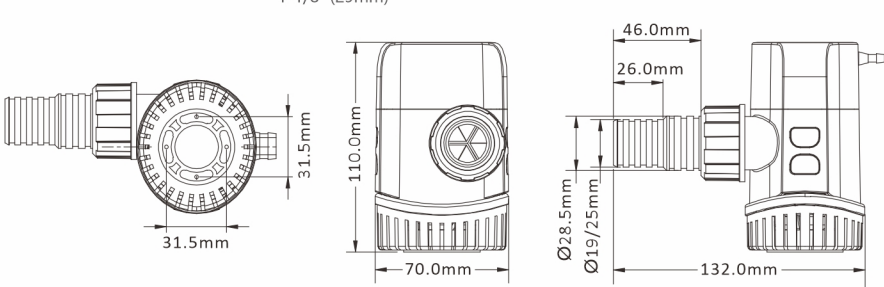
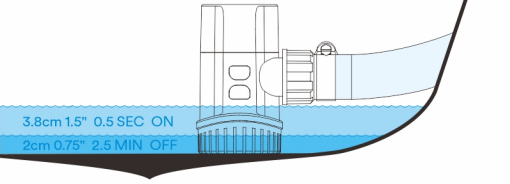


Rotation Function

Motor can be sold separately



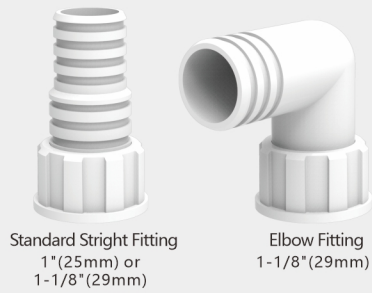
Running for 0.5 sec
ON
OFF
Check for water every 2.5 min



STANDARD PUMP CONFIGURATIONS

Pump Model	Motor Model	Flow rate	Volts	Current	Head	Wire Lead	Outlet Dia.	N.W./G.W.
SFBP1-G600-13B	SFMA1-G600-13B	600GPH	12V	2.5A	2.5m/7.5ft	3' (1 m)		0.40KG/0.47KG
SFBP2-G600-13B	SFMA2-G600-13B	600GPH	24V	1.5A	2.5m/7.5ft	3' (1 m)	3/4" (19mm)	0.40KG/0.47KG
SFBP1-G800-13B	SFMA1-G800-13B	800GPH	12V	3.5A	3m/9ft	3' (1 m)	1 1/8" (29mm)	0.40KG/0.47KG
SFBP2-G800-13B	SFMA2-G800-13B	800GPH	24V	2.0A	3m/9ft	3' (1 m)		0.40KG/0.47KG
SFBP1-G1100-13B	SFMA1-G1100-13B	1100GPH	12V	4.0A	4m/12ft	3' (1 m)	1" (25mm)	0.40KG/0.47KG
SFBP2-G1100-13B	SFMA2-G1100-13B	1100GPH	24V	2.5A	4m/12ft	3' (1 m)	1 1/8" (29mm)	0.40KG/0.47KG

NEW



Standard Straight Fitting
1" (25mm) or
1-1/8" (29mm)

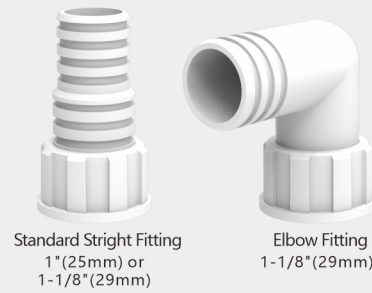
Elbow Fitting
1-1/8" (29mm)



Blister



NEW



Standard Straight Fitting
1" (25mm) or
1-1/8" (29mm)

Elbow Fitting
1-1/8" (29mm)

Blister



LIVEWELL-BAITWELL PUMPS 13C SERIES 800/1100 GPH

FEATURES & BENEFITS

- Discharge nozzle can be rotated 360 degrees for optimal installation
- Pump housing can rotate 360 degrees to allow positioning of the discharge outlet
- Dual port fitting for optional washdown pump
- Includes removable discharge straight and elbow fittings
- Quick one hand "push button" motor cartridge removal system
- Anti-Airlock protection

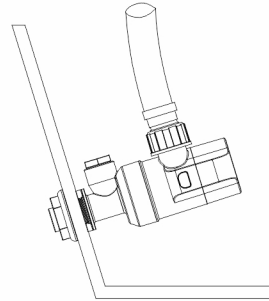
Split quick-connect joint design no need to disconnect base or plumbing when replacing pump.



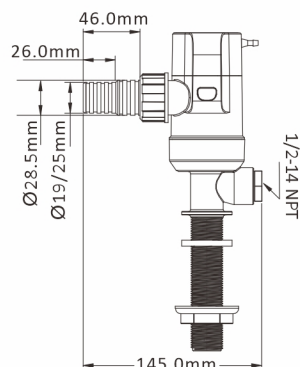
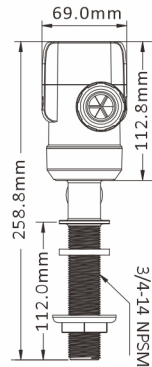
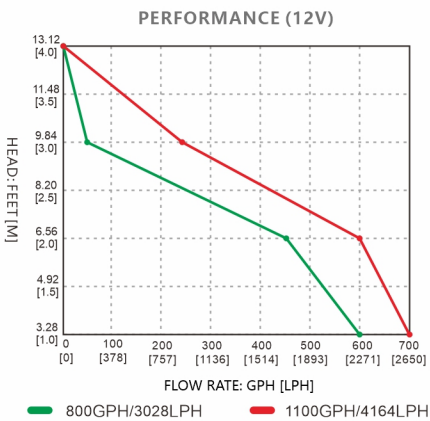
Rotation Function



Pump Body
Rotation Function



Motor can be
sold separately



STANDARD PUMP CONFIGURATIONS

Pump Model	Motor Model	Flow rate	Volts	Current	Head	Wire Lead	Outlet Dia.	N.W./G.W.
SFBP1-G800-13C	SFMA1-G800-13A	800GPH	12V	3.5A	3m/9ft	3' (1 m)	3/4" (19mm)	0.55KG/0.60KG
SFBP2-G800-13C	SFMA2-G800-13A	800GPH	24V	2.0A	3m/9ft	3' (1 m)	1 1/8" (29mm)	0.55KG/0.60KG
SFBP1-G1100-13C	SFMA1-G1100-13A	1100GPH	12V	4.0A	4m/12ft	3' (1 m)	1" (25mm)	0.55KG/0.60KG
SFBP2-G1100-13C	SFMA2-G1100-13A	1100GPH	24V	2.5A	4m/12ft	3' (1 m)	1 1/8" (29mm)	0.55KG/0.60KG

LIVEWELL-BAITWELL PUMPS 13E SERIES 800/1100 GPH

FEATURES & BENEFITS

- Pump housing can rotate 360 degrees to allow positioning of the discharge outlet
- Discharge nozzle can be rotated 360 degrees for optimal installation
- Dual port fitting for optional washdown pump
- Quick one hand "push button" motor cartridge removal system
- Includes removable discharge straight and elbow fittings
- Anti-Airlock protection

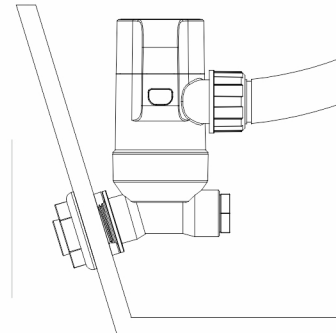
Split quick-connect joint design no need to disconnect base or plumbing when replacing pump.



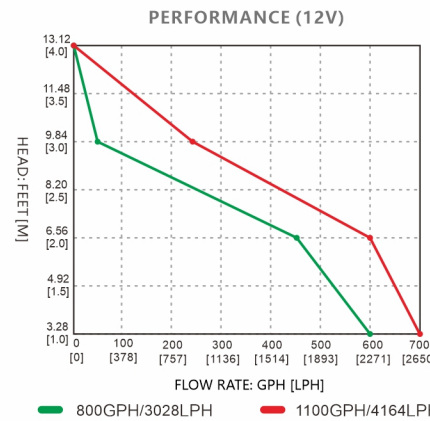
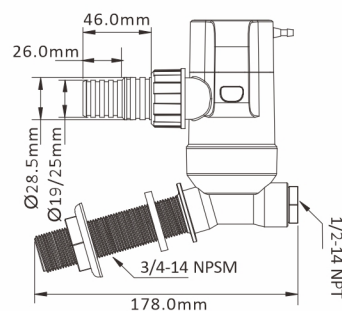
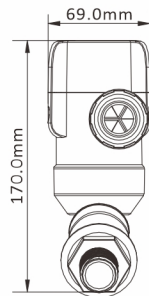
Rotation Function



Pump Body
Rotation Function



Motor can be
sold separately



STANDARD PUMP CONFIGURATIONS

Pump Model	Motor Model	Flow rate	Volts	Current	Head	Wire Lead	Outlet Dia.	N.W./G.W.
SFBP1-G800-13E	SFMA1-G800-13A	800GPH	12V	3.5A	3m/9ft	3' (1 m)	3/4" (19mm)	0.55KG/0.60KG
SFBP2-G800-13E	SFMA2-G800-13A	800GPH	24V	2.0A	3m/9ft	3' (1 m)	1 1/8" (29mm)	0.55KG/0.60KG
SFBP1-G1100-13E	SFMA1-G1100-13A	1100GPH	12V	4.0A	4m/12ft	3' (1 m)	1" (25mm)	0.55KG/0.60KG
SFBP2-G1100-13E	SFMA2-G1100-13A	1100GPH	24V	2.5A	4m/12ft	3' (1 m)	1 1/8" (29mm)	0.55KG/0.60KG

NEW

Standard Stright Fitting
1" (25mm) or
1-1/8" (29mm)

Elbow Fitting
1-1/8" (29mm)



Blister



NEW



Color Box

Standard Stright Fitting
1 1/8" (29mm)



LIVWELL-BAITWELL PUMPS 13D SERIES 800/1100 GPH

FEATURES & BENEFITS

- Pump housing can rotate 360 degrees to allow positioning of the discharge outlet
- Discharge nozzle can be rotated 360 degrees for optimal installation
- Dual port fitting for optional washdown pump
- Quick one hand "push button" motor cartridge removal system
- Includes removable discharge straight and elbow fittings
- Anti-Airlock protection

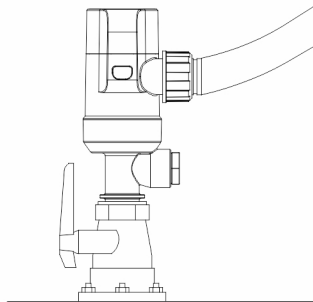
Split quick-connect joint design no need to disconnect base or plumbing when replacing pump.



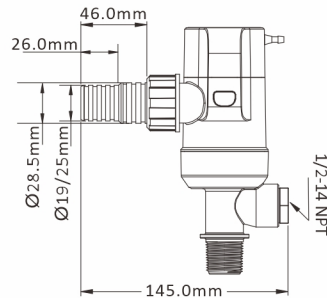
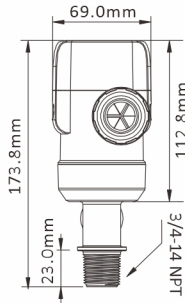
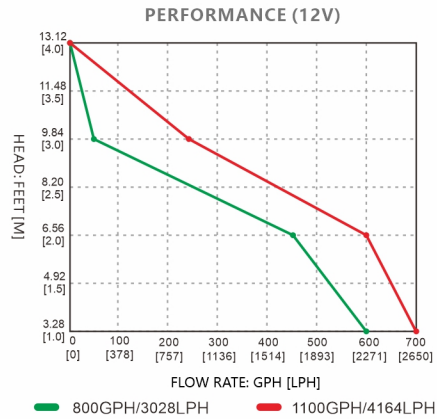
Rotation Function



Pump Body Rotation Function



Motor can be sold separately



STANDARD PUMP CONFIGURATIONS

Pump Model	Motor Model	Flowrate	Volts	Current	Head	Wire Lead	Outlet Dia.	N.W./G.W.
SFBP1-G800-13D	SFMA1-G800-13A	800GPH	12V	3.0A	3m/9ft	3' (1 m)	3/4" (19mm)	0.50KG/0.55KG
SFBP2-G800-13D	SFMA2-G800-13A	800GPH	24V	1.6A	3m/9ft	3' (1 m)	1 1/8" (29mm)	0.50KG/0.55KG
SFBP1-G1100-13D	SFMA1-G1100-13A	1100GPH	12V	3.5A	4m/12ft	3' (1 m)	1" (25mm)	0.50KG/0.55KG
SFBP2-G1100-13D	SFMA2-G1100-13A	1100GPH	24V	1.8A	4m/12ft	3' (1 m)	1 1/8" (29mm)	0.50KG/0.55KG

NON-AUTOMATIC BILGE PUMPS 13A SERIES 1500/2000 GPH

FEATURES & BENEFITS

- CE, RoHS, ISO 8846, ISO 8849 standards
- Includes check valve to prevent water back flow
- Include removable discharge straight fitting
- Submersible and ignition protected
- High efficiency, low amp motor
- Stainless-steel motor shaft
- Anti-Airlock protection

Split quick-connect joint design no need to disconnect base or plumbing when replacing pump.

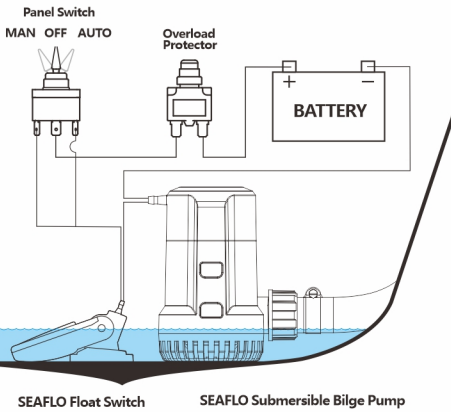


Optional Accessories
1-1/8" (29mm)

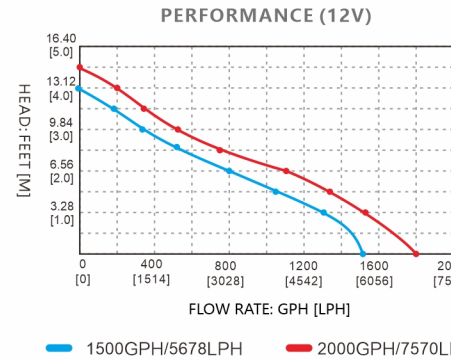
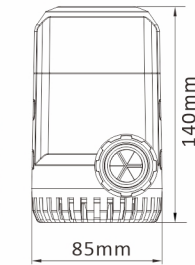
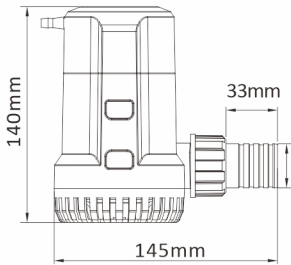
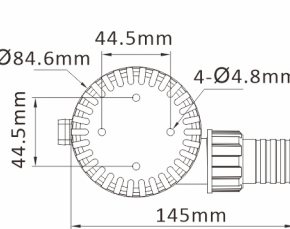


Rotation Function

Motor can be sold separately



SEAFLO Float Switch SEAFLO Submersible Bilge Pump



STANDARD PUMP CONFIGURATIONS

Pump Model	Motor Model	Flow rate	Volts	Current	Head	Wire Lead	Outlet Dia.	N.W./G.W.
SFBP1-G1500-13A	SFMA1-G1500-13A	1500GPH	12V	4.5A	5m/16.40ft	3' (1 m)	1 1/8" (29mm)	0.65KG/0.75KG
SFBP2-G1500-13A	SFMA2-G1500-13A	1500GPH	24V	2.5A	5m/16.40t	3' (1 m)	1 1/8" (29mm)	0.65KG/0.75KG
SFBP1-G2000-13A	SFMA1-G2000-13A	2000GPH	12V	7.5A	5.5m/18.04ft	3' (1 m)	1 1/8" (29mm)	0.75KG/0.85KG
SFBP2-G2000-13A	SFMA2-G2000-13A	2000GPH	24V	4.0A	5.5m/18.04ft	3' (1 m)	1 1/8" (29mm)	0.75KG/0.85KG



ELECTRONIC TIMER SENSING AUTO BILGE PUMPS 13B SERIES 1500/2000 GPH

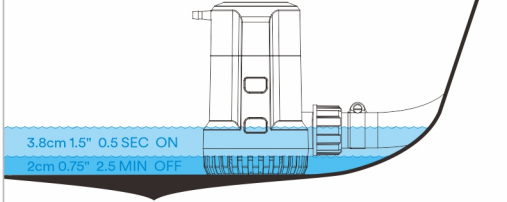
FEATURES & BENEFITS

- Compact automatic pump-no float switch needed
- Check for water every 2.5 minutes, Runs for a half second
- CE, RoHS, ISO 8846, ISO8849 standards
- Submersible and ignition protected
- High efficiency, low amp motor
- Stainless-steel motor shaft
- Includes check valve to prevent water back flow
- Include removable discharge straight fitting

Split quick-connect joint design no need to disconnect base or plumbing when replacing pump.

Motor can be sold separately

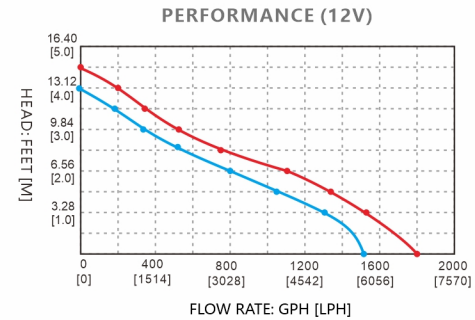
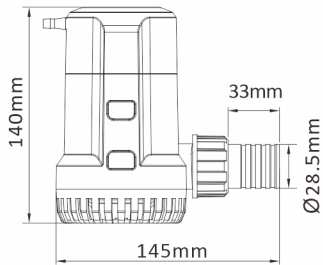
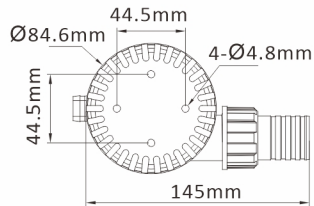
Running for 0.5 sec
ON
OFF
Check for water every 2.5 min



Optional Accessories
1-1/8" (29mm)



Rotation Function
360°



1500GPH/5678LPH 2000GPH/7570LPH

STANDARD PUMP CONFIGURATIONS

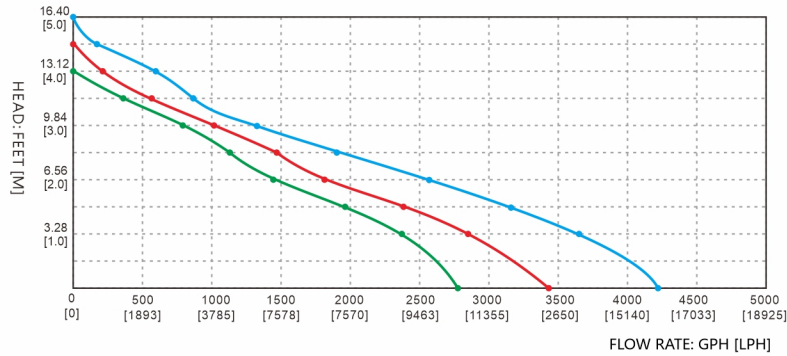
Pump Model	Motor Model	Flow rate	Volts	Current	Head	Wire Lead	Outlet Dia.	N.W./G.W.
SFBP1-G1500-13B	SFMA1-G1500-13B	1500GPH	12V	4.5A	5.0m/16.40ft	3' (1 m)	1 1/8" (29mm)	0.68KG/0.78KG
SFBP2-G1500-13B	SFMA2-G1500-13B	1500GPH	24V	2.5A	5.0m/16.40ft	3' (1 m)		0.68KG/0.78KG
SFBP1-G2000-13B	SFMA1-G2000-13B	2000GPH	12V	7.5A	5.5m/18.04ft	3' (1 m)		0.78KG/0.88KG
SFBP2-G2000-13B	SFMA2-G2000-13B	2000GPH	24V	4.0A	5.5m/18.04ft	3' (1 m)		0.78KG/0.88KG

NON-AUTOMATIC BILGE PUMPS 13A SERIES 3000/3700/4700 GPH

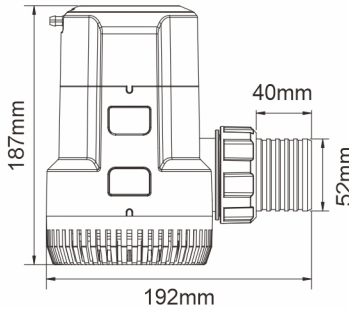
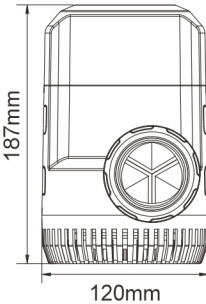
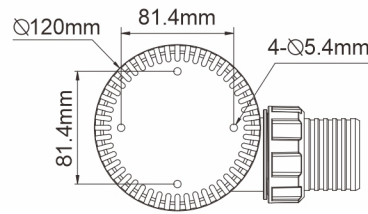
FEATURES & BENEFITS

- CE, RoHS, ISO 8846, ISO 8849 standards
- Traditional operation by switch or float switch
- Entirely Submersible
- Run dry capable for workloads
- Quiet operation
- Stainless steel shaft
- Snap-off strainer base for easy maintenance
- Pump and switch are stand alone products
- Sealed efficient, long life motors
- Anti-Airlock protection
- Exclusive moisture tight seals
- Marine grade blocked wiring

PERFORMANCE (12V)

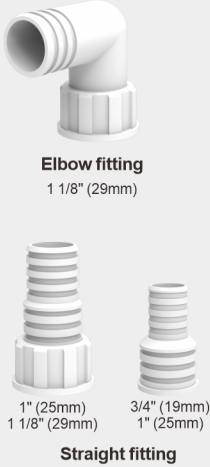


3000GPH/11355LPH 3700GPH/140045LPH 4700GPH/17790LPH



STANDARD PUMP CONFIGURATIONS

Model	Flow rate	Volts	Current	Fuse	Head	Wire lead	Outlet Dia.	N.W./G.W.
SFBP1-G3000-13A	3000 GPH	12 V	12 A	20 A	5.5 m / 18.04'	1 m / 3'	1.5" (40mm) 2" (52mm)	2.1kg/2.2kg
SFBP2-G3000-13A	3000 GPH	24 V	6 A	10 A	5.5 m / 18.04'	1 m / 3'	1.5" (40mm) 2" (52mm)	2.1kg/2.2kg
SFBP1-G3700-13A	3700 GPH	12 V	14 A	25 A	6.0 m / 19.69'	1 m / 3'	1.5" (40mm) 2" (52mm)	2.1kg/2.2kg
SFBP2-G3700-13A	3700 GPH	24 V	7 A	12 A	6.0 m / 19.69'	1 m / 3'	1.5" (40mm) 2" (52mm)	2.1kg/2.2kg
SFBP1-G4700-13A	4700 GPH	12 V	16 A	25 A	6.5 m / 21.33'	1 m / 3'	1.5" (40mm) 2" (52mm)	2.1kg/2.2kg
SFBP2-G4700-13A	4700 GPH	24 V	8 A	14 A	6.5 m / 21.33'	1 m / 3'	1.5" (40mm) 2" (52mm)	2.1kg/2.2kg

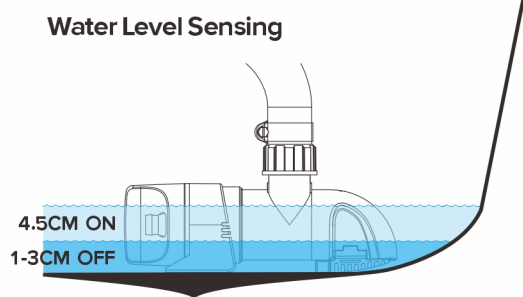


WATER LEVEL SENSING LOW PROFILE AUTOMATIC BILGE PUMP 14A SERIES
800/1100 GPH

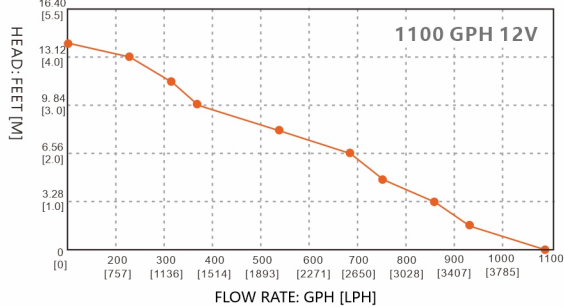
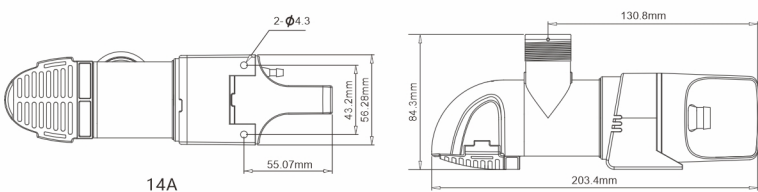
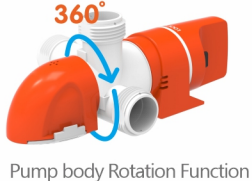
FEATURES & BENEFITS

- Low narrow design for tight/awkward bilge spaces
- Easy installation - outlet and pump body 360° rotate to suit your installation
- Efficient operation - Very low power consumption
- Low profile strainer - Leaves the bilge almost dry
- Easy to clean- snap fit assembly
- Easy to clean – unique clever strainer design with 360° rotation function
- Easy to clean – easy to remove and replace for cleaning
- Includes check valve to prevent water backflow
- CE, RoHS, ISO 8846,ISO8849 standards

Split quick-connect joint design no need to disconnect base or plumbing when replacing pump.



Motor can be sold separately



STANDARD PUMP CONFIGURATIONS

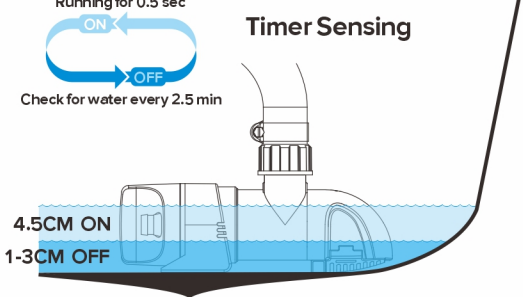
Model	Model	Flow rate	Volts	Current	Head	Mode of Operation	Outlet Dia.	N.W./G.W.
SFBP1-G800-14A	SFMA1-G800-14A	800GPH	12V	3.2A	3.2m/10.5'	automatic water level sensor	3/4" (19mm) 1" (25mm) 1 1/8" (29mm)	0.39/0.56kg
SFBP2-G800-14A	SFMA2-G800-14A	800GPH	24V	2.0A	3.2m/10.5'			0.39/0.56kg
SFBP1-G1100-14A	SFMA1-G1100-14A	1100GPH	12V	4.2A	4.0m/13'			0.39/0.56kg
SFBP2-G1100-14A	SFMA2-G1100-14A	1100GPH	24V	3.0A	4.0m/13'			0.39/0.56kg

TIMER SENSING LOW PROFILE AUTOMATIC BILGE PUMP 14B SERIES
800/1100 GPH

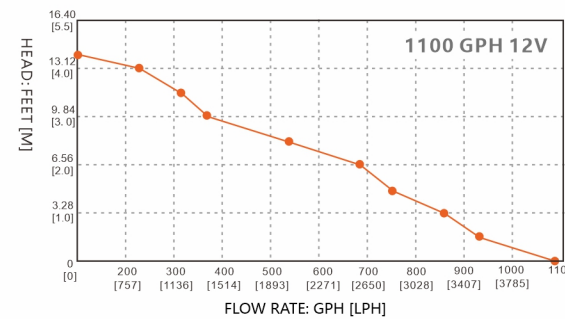
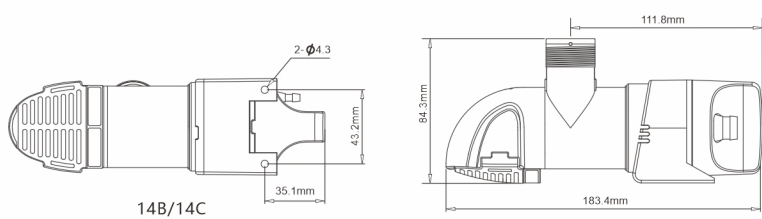
FEATURES & BENEFITS

- Low narrow design for tight/awkward bilge spaces
- Easy installation - outlet and pump body 360° rotate to suit your installation
- Efficient operation - Very low power consumption
- Low profile strainer - Leaves the bilge almost dry
- Easy to clean- snap fit assembly
- Easy to clean – unique clever strainer design with 360° rotation function
- Easy to clean – easy to remove and replace for cleaning
- Includes check valve to prevent water backflow
- CE, RoHS, ISO 8846,ISO8849 standards

Split quick-connect joint design no need to disconnect base or plumbing when replacing pump.



Motor can be sold separately



STANDARD PUMP CONFIGURATIONS

Model	Model	Flow rate	Volts	Current	Head	Mode of Operation	Outlet Dia.	N.W./G.W.
SFBP1-G800-14B	SFMA1-G800-14B	800GPH	12V	3.2A	3.2m/10.5'	automatic timer sensor	3/4" (19mm) 1" (25mm) 1 1/8" (29mm)	0.38/0.55kg
SFBP2-G800-14B	SFMA2-G800-14B	800GPH	24V	2.0A	3.2m/10.5'			0.38/0.55kg
SFBP1-G1100-14B	SFMA1-G1100-14B	1100GPH	12V	4.2A	4.0m/13'			0.38/0.55kg
SFBP2-G1100-14B	SFMA2-G1100-14B	1100GPH	24V	3.0A	4.0m/13'			0.38/0.55kg

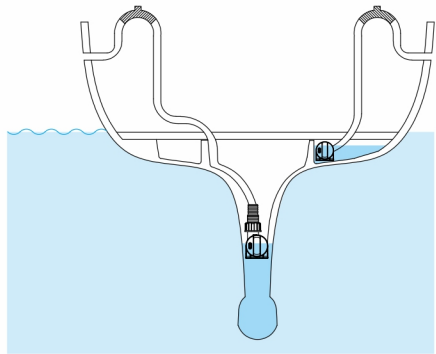


LOW PROFILE BILGE PUMP 14C SERIES 800/1100 GPH

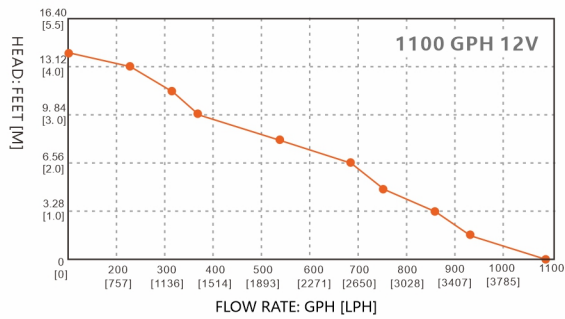
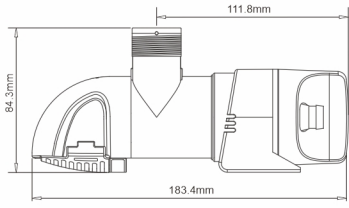
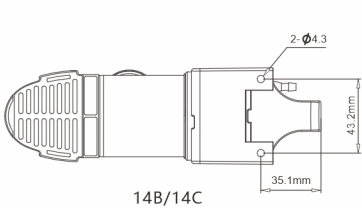
FEATURES & BENEFITS

- Low narrow design for tight/awkward bilge spaces
- Easy installation - outlet and pump body 360° rotate to suit your installation
- Efficient operation - Very low power consumption
- Low profile strainer - Leaves the bilge almost dry
- Easy to clean- snap fit assembly
- Easy to clean – unique clever strainer design with 360° rotation function
- Easy to clean – easy to remove and replace for cleaning
- Includes check valve to prevent water backflow
- CE, RoHS, ISO 8846,ISO8849 standards

Split quick-connect joint design no need to disconnect base or plumbing when replacing pump.



Take out motor and fasten with screw before install the pump



STANDARD PUMP CONFIGURATIONS

Model	Model	Flow rate	Volts	Current	Head	Mode of Operation	Outlet Dia.	N.W./G.W.
SFBP1-G800-14C	SFMA1-G800-14C	800GPH	12V	3.2A	3.2m/10.5'	manual	3/4" (19mm)	0.35/0.51kg
SFBP2-G800-14C	SFMA2-G800-14C	800GPH	24V	2.0A	3.2m/10.5'		1" (25mm)	0.35/0.51kg
SFBP1-G1100-14C	SFMA1-G1100-14C	1100GPH	12V	4.2A	4.0m/13'		1 1/8" (29mm)	0.35/0.51kg
SFBP2-G1100-14C	SFMA2-G1100-14C	1100GPH	24V	3.0A	4.0m/13'			0.35/0.51kg

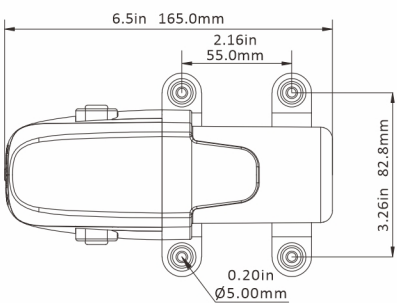
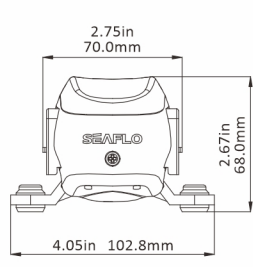
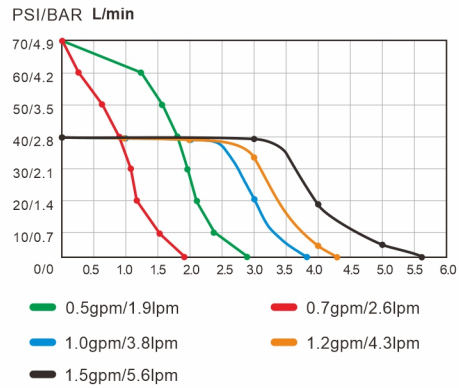
23A SERIES WATER PUMP

FEATURES & BENEFITS

- Open flow up to 1.5gpm/5.6lpm
- Dry run capability
- Max Self-priming up to 5 feet/1.5m
- Waterproof grade IP54 with extra cover
- On-demand long life pressure switch
- Configurable reflux function
- Adapt to a variety of scenarios
- Multiple connector options
- By pass technology reduces cycling
- Ignition protected, CE, RoHS

PUMP

- Max Recommended Temperature 140 °F (60 °C) Max.
- Priming Capabilities 2 feet (0.6m) suction lift for 0.5 and 0.7gpm 5 feet (1.5m) suction lift for 1, 1.2 and 1.5gpm
- Inlet/Outlet Ports 5/8" quick connector
- Weight 1.54 lbs (0.7 kg)



STANDARD PUMP CONFIGURATIONS

Model	Voltage	GPM/LPM	Control Type	Amps	PSI/BAR	Valves	Diaphragm	Ports
SFDP1-005-070-23A	12V	0.5/1.9	Switch & By pass	1.8Max	70/4.8	EPDM	Santoprene	5/8" quick attach
SFDP2-005-070-23A	24V	0.5/1.9	Switch & By pass	1.0Max	70/4.8	EPDM	Santoprene	5/8" quick attach
SFDP1-007-070-23A	12V	0.7/2.6	Switch & By pass	2.5Max	70/4.8	EPDM	Santoprene	5/8" quick attach
SFDP2-007-070-23A	24V	0.7/2.6	Switch & By pass	1.2Max	70/4.8	EPDM	Santoprene	5/8" quick attach
SFDP1-010-040-23A	12V	1.0/3.8	Switch & By pass	3.8Max	40/2.8	EPDM	Santoprene	5/8" quick attach
SFDP2-010-040-23A	24V	1.0/3.8	Switch & By pass	2.0Max	40/2.8	EPDM	Santoprene	5/8" quick attach
SFDP1-012-040-23A	12V	1.2/4.3	Switch & By pass	4.2Max	40/2.8	EPDM	Santoprene	5/8" quick attach
SFDP2-012-040-23A	24V	1.2/4.3	Switch & By pass	2.2Max	40/2.8	EPDM	Santoprene	5/8" quick attach
SFDP1-015-040-23A	12V	1.5/5.6	Switch & By pass	4.5Max	40/2.8	EPDM	Santoprene	5/8" quick attach
SFDP2-015-040-23A	24V	1.5/5.6	Switch & By pass	2.5Max	40/2.8	EPDM	Santoprene	5/8" quick attach

Inquire about other configurations, or valve and diaphragm materials



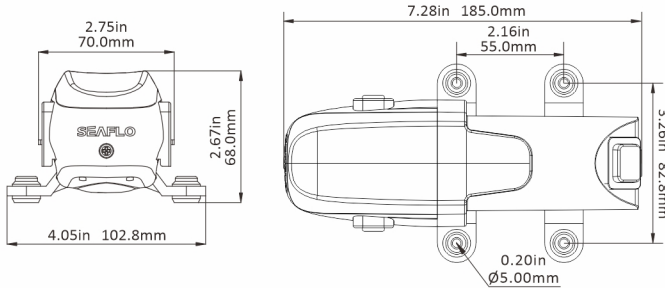
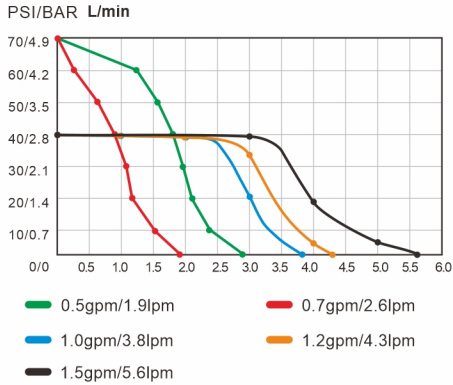
23B SERIES WATER PUMP

FEATURES & BENEFITS

Open flow up to 1.5gpm/5.6lpm
Dry run capability
Max Self-priming up to 5 feet/1.5m
Waterproof grade IP54 with extra cover
On-demand long life pressure switch
Configurable reflux function
Adapt to a variety of scenarios
Multiple connector options
By pass technology reduces cycling
Extra button for easy control
Ignition protected, CE, RoHS

PUMP

Max Recommended Temperature
140 °F (60 °C) Max.
Priming Capabilities
5 feet (1.5m) suction lift
Inlet/Outlet Ports
5/8" quick connector
Weight
1.54 lbs (0.7 kg)



STANDARD PUMP CONFIGURATIONS

Model	Voltage	GPM/LPM	Control Type	Amps(A)	PSI/BAR	Valves	Diaphragm	Ports
SFDPAX-005-070-23B	100V-240V	0.5 / 1.89	Switch & By pass	1.8Max	70/4.8	EPDM	Santoprene	5/8" quick attach
SFDPAX-007-070-23B	100V-240V	0.7 / 2.65	Switch & By pass	2.2Max	70/4.8	EPDM	Santoprene	5/8" quick attach
SFDPAX-010-040-23B	100V-240V	1.0 / 3.8	Switch & By pass	2.5Max	40/2.8	EPDM	Santoprene	5/8" quick attach
SFDPAX-012-040-23B	100V-240V	1.2 / 4.5	Switch & By pass	2.8Max	40/2.8	EPDM	Santoprene	5/8" quick attach
SFDPAX-015-040-23B	100V-240V	1.5 / 5.6	Switch & By pass	3.0Max	40/2.8	EPDM	Santoprene	5/8" quick attach

Inquire about other configurations, or valve and diaphragm materials

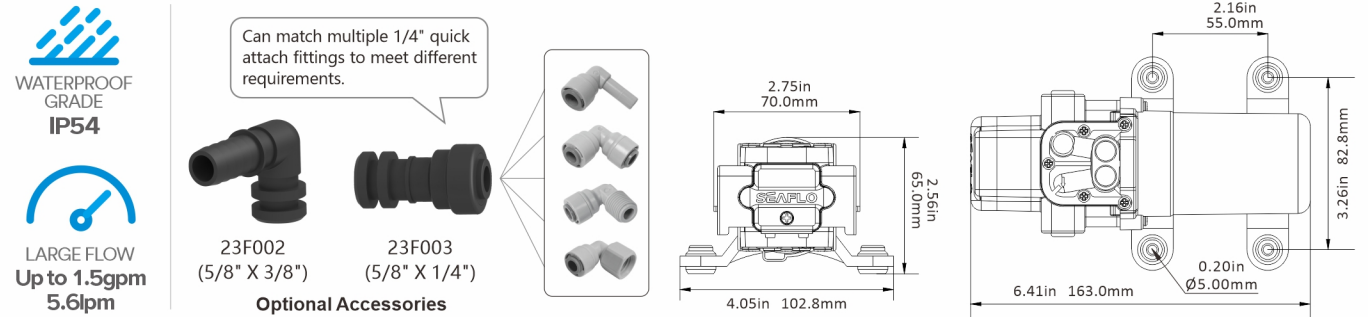
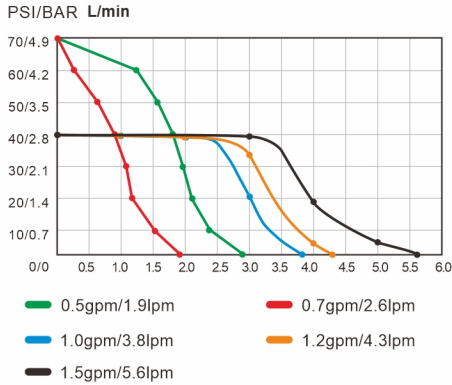
23C SERIES WATER PUMP

FEATURES & BENEFITS

Continuous duty
Can run dry
Self-Priming
Quite operation
Long Life Pressure Switch
Waterproof grade IPX54
Multiple ports available
On-demand pressure switch
Adjustable pressure setting
Capable of supplying 1-2 fixtures
By pass technology reduces cycling

PUMP

Max Recommended Temperature
140 °F (60 °C) Max.
Priming Capabilities
2.4 feet (0.8m) suction lift
Inlet/Outlet Ports
5/8" hose barb
(Custom O-Ring Outlets available)
Weight
1.54 lbs (0.7 kg)



STANDARD PUMP CONFIGURATIONS

Model	Voltage	GPM/LPM	Control Type	Amps(A)	PSI/BAR	Valves	Diaphragm	Ports
SFDP1-005-070-23C	12V	0.5/1.9	Switch & By pass	1.8Max	70/4.8	EPDM	Santoprene	5/8" quick attach
SFDP2-005-070-23C	24V	0.5/1.9	Switch & By pass	1.0Max	70/4.8	EPDM	Santoprene	5/8" quick attach
SFDP1-007-070-23C	12V	0.7/2.6	Switch & By pass	2.5Max	70/4.8	EPDM	Santoprene	5/8" quick attach
SFDP2-007-070-23C	24V	0.7/2.6	Switch & By pass	1.2Max	70/4.8	EPDM	Santoprene	5/8" quick attach
SFDP1-010-040-23C	12V	1.0/3.8	Switch & By pass	3.8Max	40/2.8	EPDM	Santoprene	5/8" quick attach
SFDP2-010-040-23C	24V	1.0/3.8	Switch & By pass	2.0Max	40/2.8	EPDM	Santoprene	5/8" quick attach
SFDP1-012-040-23C	12V	1.2/4.3	Switch & By pass	4.2Max	40/2.8	EPDM	Santoprene	5/8" quick attach
SFDP2-012-040-23C	24V	1.2/4.3	Switch & By pass	2.2Max	40/2.8	EPDM	Santoprene	5/8" quick attach
SFDP1-015-040-23C	12V	1.5/5.6	Switch & By pass	4.5Max	40/2.8	EPDM	Santoprene	5/8" quick attach
SFDP2-015-040-23C	24V	1.5/5.6	Switch & By pass	2.5Max	40/2.8	EPDM	Santoprene	5/8" quick attach

Inquire about other configurations, or valve and diaphragm materials



23D SERIES WATER PUMP

FEATURES & BENEFITS

Can run dry
Quite operation
Self-Priming
Long Life Pressure Switch
Waterproof grade IPX54
Multiple ports available
On-demand pressure switch
Adjustable pressure setting
Capable of supplying 1-2 fixtures
Continuous duty with bypass technology

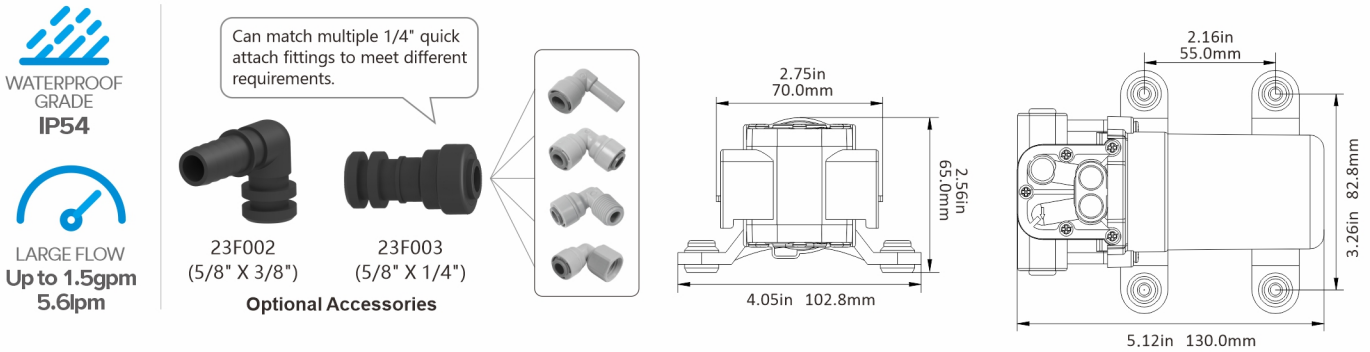
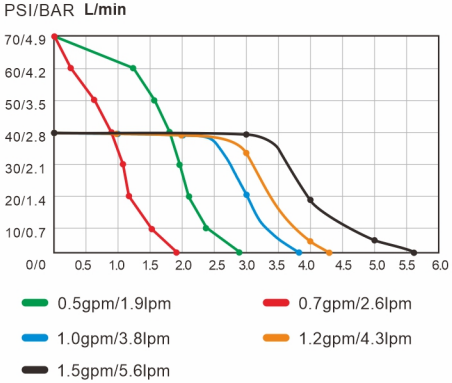
PUMP

Max Recommended Temperature
140 °F (60 °C) Max.

Priming Capabilities
2.4 feet (0.8m) suction lift

Inlet/Outlet Ports
5/8" hose barb
(Custom O-Ring Outlets available)

Weight
1.54 lbs (0.7 kg)



STANDARD PUMP CONFIGURATIONS

Model	Voltage	GPM/LPM	Control Type	Amps(A)	PSI/BAR	Valves	Diaphragm	Ports
SFDP1-005-070-23D	12V	0.5/1.9	By pass	1.8Max	70/4.8	EPDM	Santoprene	5/8" quick attach
SFDP2-005-070-23D	24V	0.5/1.9	By pass	1.0Max	70/4.8	EPDM	Santoprene	5/8" quick attach
SFDP1-007-070-23D	12V	0.7/2.6	By pass	2.5Max	70/4.8	EPDM	Santoprene	5/8" quick attach
SFDP1-007-070-23D	24V	0.7/2.6	By pass	1.2Max	70/4.8	EPDM	Santoprene	5/8" quick attach
SFDP1-010-040-23D	12V	1.0/3.8	By pass	3.8Max	40/2.8	EPDM	Santoprene	5/8" quick attach
SFDP1-010-040-23D	24V	1.0/3.8	By pass	2.0Max	40/2.8	EPDM	Santoprene	5/8" quick attach
SFDP1-012-040-23D	12V	1.2/4.3	By pass	4.2Max	40/2.8	EPDM	Santoprene	5/8" quick attach
SFDP1-012-040-23D	24V	1.2/4.3	By pass	2.2Max	40/2.8	EPDM	Santoprene	5/8" quick attach
SFDP1-015-040-23D	12V	1.5/5.6	By pass	4.5Max	40/2.8	EPDM	Santoprene	5/8" quick attach
SFDP2-015-040-23D	24V	1.5/5.6	By pass	2.5Max	40/2.8	EPDM	Santoprene	5/8" quick attach

Inquire about other configurations, or valve and diaphragm materials

PORTABLE MARINE BOAT FUEL TANK WITH GAUGE

DESCRIPTION

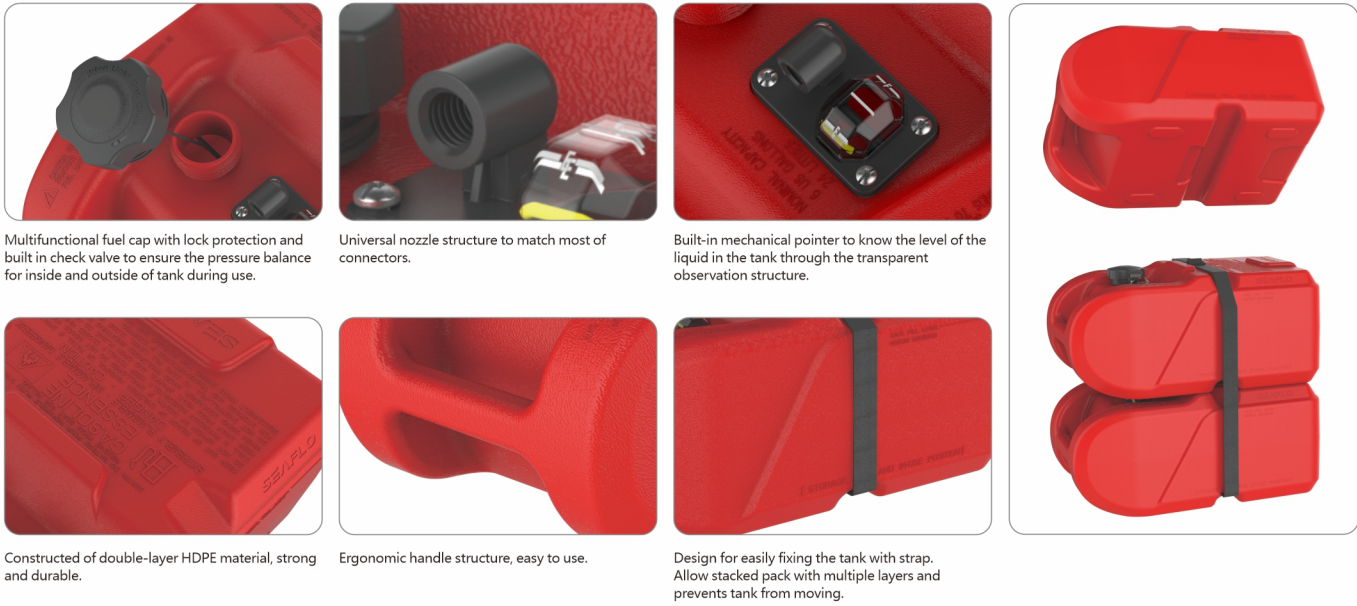
SEAFLO 3 Gallon/12 Liter, 6 Gallon/24 Liter Portable Marine Boat Fuel Tank with Gauge is constructed of 2 layers HDPE, which is strong & durable. Designed with ergonomic handle structure and built-in mechanical pointer make it easier use. It complies with 2010 EPA regulations and meets EPA CFR 40, California CCR 2468 and AS/NZS 2906:2001 standards.

TYPICAL APPLICATIONS

SEAFLO Portable Fuel Tank is designed for use in all marine and non-marine small engine applications

FEATURES & BENEFITS

Automatic vacuum valve ensures proper fuel flow and eliminates the need for manual vent
Low permeation tank virtually eliminates fuel evaporation and fuel loss.
1/4" NPT thread to fit standard tank fittings
Ethanol and Alcohol compatible



STANDARD TANK CONFIGURATIONS

Model	Capacity	Length	Width	Height	Weight (DRY)	Fuel	Color
SFGT-12-01	3 Gallon/12 Liter	16.9"(430mm)	11.4"(290mm)	7.3"(185.5mm)	1.40KG	Gasoline	Red
SFGT-24-01	6 Gallon/24 Liter	19.7"(500mm)	13.4"(340mm)	9.5"(241mm)	2.35KG	Gasoline	Red



ALL STAR SERIES - AUTO SHUT OFF FUEL CANS / 5L, 10L, 20L

DESCRIPTION

It is the latest version (the third generation) of SEAFLO all-star jerry can. With more user-friendly designs, SEAFLO all-star jerry can is more convenient and safer to use. It can hold gasoline, diesel, engine oil, alcohol, clean fuels, etc. The products are widely used in outdoor fuel equipment, such as automobiles, RVs, yachts, garden tools, agricultural equipment, ATVs; it also can be used in pharmaceutical factories, gas stations, energy factories, etc.

FEATURES & BENEFITS

- ① Auto shut off nozzle is easy to operate and will be closed automatically to prevent from leakage
- ② Child proof lock for safer use
- ③ Unique liquid level line for checking the volume at a glance
- ④ Innovative U-shaped groove design, Body of can has better ability of shock resistance, which make it solid and durable
- ⑤ Venting hole ensures faster and safer filling
- ⑥ Humanized side handle for easier use
- ⑦ The fixation problems during transportation is solved easily when U-shaped groove and band fit together.
- ⑧ Widened bottom to prevent from falling; for easy and safe storage, transportation
- ⑨ Slot design for easy stacking
- ⑩ Meet Australian standard of AS/NZS 2906:2001
- ⑪ Meet requirements of EPA & CARB certification



Model	Capacity	Length	Width	Height	Weight (DRY)	Fuel	Color
SFGT-05-02	5 L	265 mm	138 mm	242 mm	0.8 kg	Gasoline	Red
SFGT-10-02	10 L	290 mm	184 mm	325 mm	1.3 kg	Gasoline	Red
SFGT-20-02	20 L	345 mm	224 mm	395 mm	1.8 kg	Gasoline	Red
SFDT-05-02	5 L	265 mm	138 mm	242 mm	0.8 kg	Diesel	Yellow
SFDT-10-02	10 L	290 mm	184 mm	325 mm	1.3 kg	Diesel	Yellow
SFDT-20-02	20 L	345 mm	224 mm	395 mm	1.8 kg	Diesel	Yellow
SF2T-05-02	5 L	265 mm	138 mm	242 mm	0.8 kg	Two-stroke	Green
SF2T-10-02	10 L	290 mm	184 mm	325 mm	1.3 kg	Two-stroke	Green
SF2T-20-02	20 L	345 mm	224 mm	395 mm	1.8 kg	Two-stroke	Green

Consult factory for other available models

PLASTIC 5L, 10L, 20L AUTO SHUT OFF FUEL CANS

Fuel Container Gasoline, Diesel, Two-stroke engine oil EAP & AS/NZS 2906:2001 Standards

DESCRIPTION

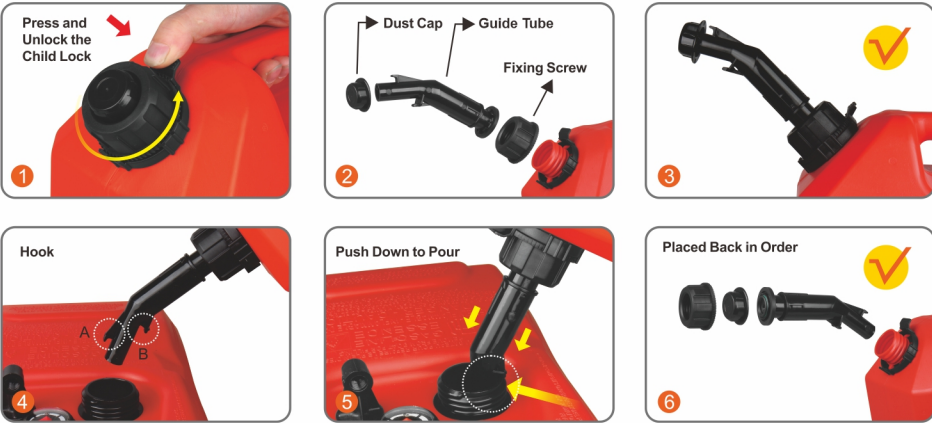
Seaflo 5, 10 & 20 Litre automatic shut off fuel cans which are designed with specially proportioned rear handle for balanced pouring that is self venting for safer & easier pouring. Features reduced emissions to protect the environment and meets EAP & AS/NZS 2906:2001 Standards.

TYPICAL APPLICATIONS

Car, lawnmower, atv or snowblower and other essential equipment topped off with fuel

FEATURES & BENEFITS

Complies to EPA & CARB Standards
Spill Proof, Durable Vented Pouring Spout
UV Stabilized High Grade Polyethylene
Certified to Australian Standard AS/NZS 2906:2001



Model	Capacity	Length	Width	Height	Weight (DRY)	Fuel	Color	Handle Type
SFGT-05-01	5 L	260 mm	130 mm	275 mm	0.8 kg	Gasoline	Red	Built-in
SFGT-10-01	10 L	290 mm	160 mm	346 mm	1.3 kg	Gasoline	Red	Built-in
SFGT-20-01	20 L	330 mm	190 mm	476 mm	1.8 kg	Gasoline	Red	Built-in
SFDT-05-01	5 L	260 mm	130 mm	275 mm	0.8 kg	Diesel	Yellow	Built-in
SFDT-10-01	10 L	290 mm	160 mm	346 mm	1.3 kg	Diesel	Yellow	Built-in
SFDT-20-01	20 L	330 mm	190 mm	476 mm	1.8 kg	Diesel	Yellow	Built-in
SF2T-05-01	5 L	260 mm	130 mm	275 mm	0.8 kg	Two-stroke Gasoline Engine Oil	Green	Built-in
SF2T-10-01	10 L	290 mm	160 mm	346 mm	1.3 kg	Two-stroke Gasoline Engine Oil	Green	Built-in
SF2T-20-01	20 L	330 mm	190 mm	476 mm	1.8 kg	Two-stroke Gasoline Engine Oil	Green	Built-in

Consult factory for other available models

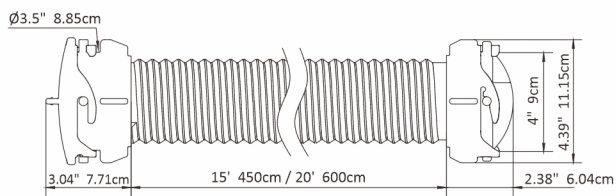
RV SEWER HOSE KIT

FEATURES & BENEFITS

- Durable construction
- Easy to store: hose can be compressed for easier storage
- Features new pre-attached fittings that rotate 360 degrees
- Kit includes: sewer hose, swivel bayonet adaptor and two storage caps
- Fittings swivel: for ease of use and detachable, designed to stay sealed



Model	Length	Pipe Material
SFSHK1-15-01	15ft/4.5m	PP
SFSHK1-20-01	20ft/6m	PP



Model	Length	Pipe Material
SFSHK2-15-01	15ft/4.5m	TPE
SFSHK2-20-01	20ft/6m	TPE

PLUMBING SYSTEM CAP

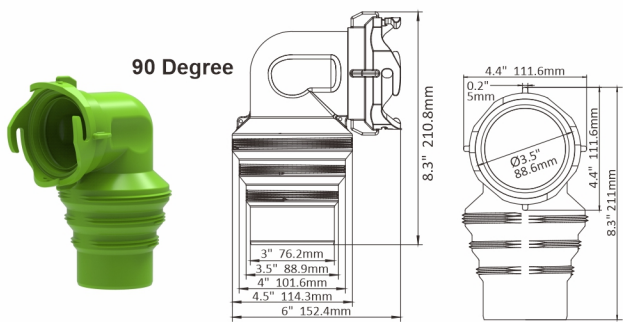
Elbow adapter fits 3" sewer hose



Model	Material	Diameter (cm)
SFPSC-01	PP	10.85/11.5

SEWER HOSE SWIVEL ADAPTOR

Connect sewer hose to your RV's waste valve fitting
fits 3", 3-1/2" and 4" threaded dump-station pipes

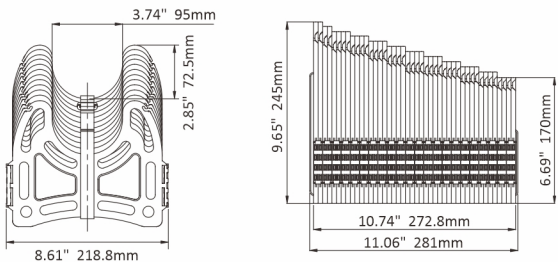


Model	Material	Size (cm)
SFSHA-01	HDPE	15.24 * 21.08

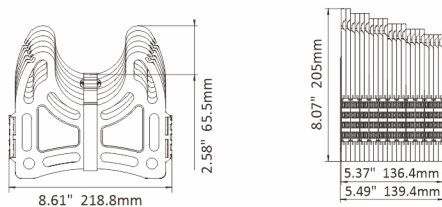
RV HOSE SUPPORT

FEATURES & BENEFITS

- Three tie down straps included
- Ready to use-no assembly required
- Curves around obstacles for better drainage
- Available with 20ft (6m) hose or 10ft (3m) hose
- Sturdy, lightweight plastic that won't creep closed-stays in place
- Self-fastening convenient straps keeps hose support closed for easy storage



SFHS-20-01



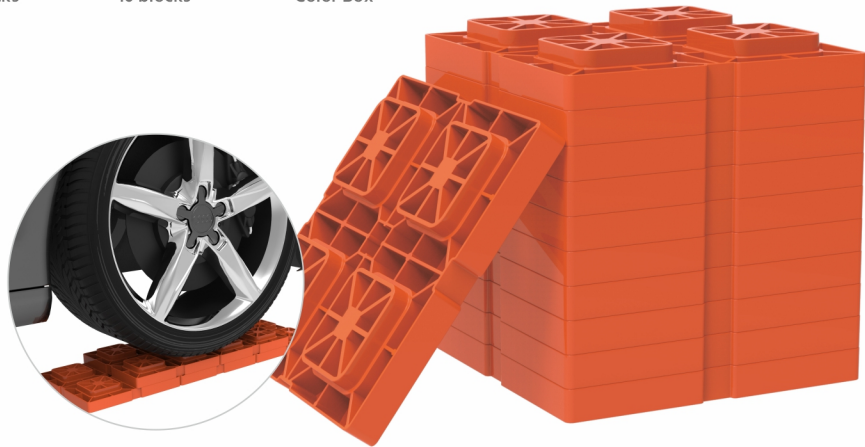
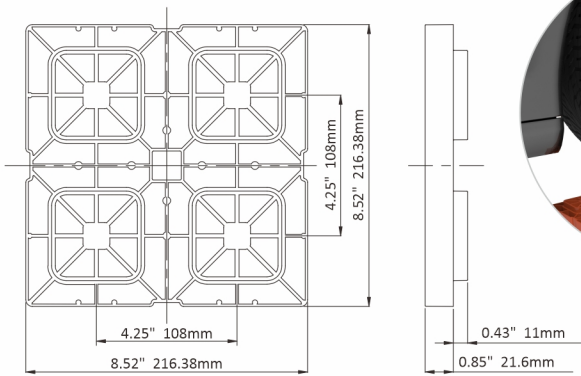
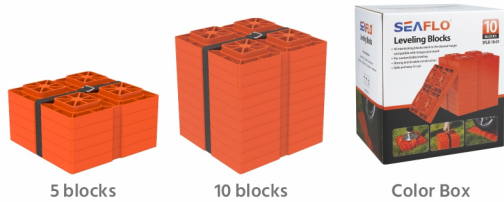
SFHS-10-01

Model	Length	Size (cm)	Color
SFHS-10-01	10ft/3m	13.9*21.9*20.5	Black
SFHS-20-01	20ft/6m	28.1 * 21.9 * 24.5	Black

LEVELING BLOCKS

FEATURES & BENEFITS

- 10 interlocking blocks stack to the desired height for customizable leveling
- Compatible with Tongue Jack Stand
- Safe and easy to use
- Strong and durable

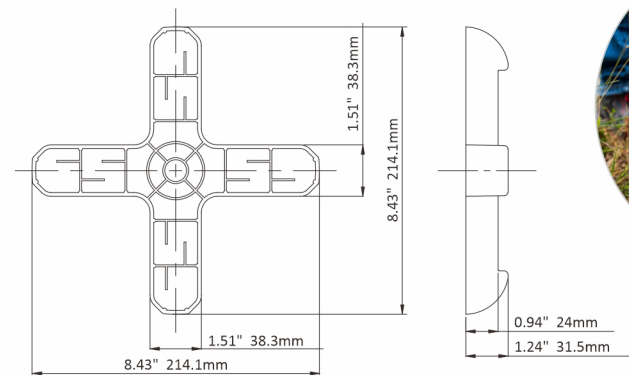


Model	Size (mm)	Color	Material
SFLB-05-01	216.38 * 216.38 * 32.6	Orange	PP
SFLB-10-01	216.38 * 216.38 * 32.6	Orange	PP

RV TONGUE JACK STAND

FEATURES & BENEFITS

- Distributes weight evenly: evenly distributes the weight of your trailer tongue while providing stability and support
- Compatibility: fits between a 2-inch and 6-inch diameter tongue jack
- Versatile fit: interlocks with 5 leveling blocks
- Small and easy to store



Model	Size (mm)	Color	Material
SFJS-01-01	214.1 * 214.1 * 31.5	Orange	PP
SFJS-05-01	214.1 * 214.1 * 31.5	Orange	PP



MULTIFUNCTIONAL PORTABLE TOILET 20L

Your best choice for Marine, RV, Camping, Board Room, Medical Care, Pregnant women, Children and The Elderly.

FEATURES & BENEFITS

- Impact & drop resistant, well-sealed
- Double-layer seal to isolate peculiar smell
- Compact design for easy storage and transportation
- Large, comfortable seat, simple to use, easy to maintain
- Split portable design, easy to carry
- Anti-slip and anti-drop design
- Blow molding process is integrated, durable and leak-proof
- Load-bearing connection lock
- The surface of the material is smooth, easy to wash, safe and environmentally friendly



Level Indicator
Display the level of content in waste tank, avoid overflow protection.



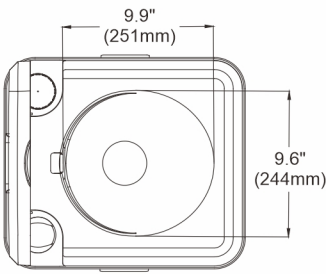
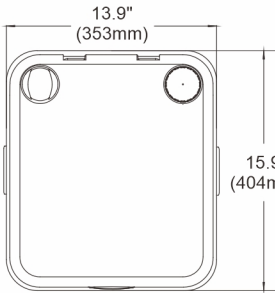
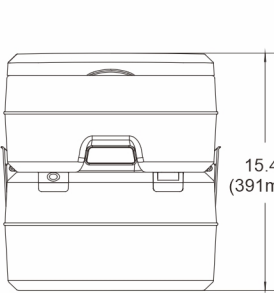
180° Rotating emptying spout
M60mm rotating spout, for hygiene and better experience.



Air Release Button
Press the button to prevent spilling and splashing before use. Decompression valve exhausts to prevent sewage from spraying out.



T-type flush nozzle and bowl
360° vortex scouring. It uses as little as 50ml water to flush the whole bowl and waste tank can be cleaned thoroughly. Ergonomic toilet seat, longer, deeper and more comfortable.



Model	Fresh water tank	Waste holding tank	Dimension(L*W*H)mm	Color	Material	Package includes
SFPT-20-02	15 L (3.75 Gallon)	20 L (5.28 Gallon)	404*353*391	Grey	PP, PA, HDPE, ABS	1 x Portable Toilet, 1 x Owners' Manual



SFMT1-01-R / SFMT2-01-R

SFMT1-01 / SFMT2-01

Electric Flush Pump
SFMT1-01 (12 V) / SFMT2-01 (24 V)

ELECTRIC MARINE TOILET

A dual-function pump eliminates the need for hand pumps and dry-bowl valves. With the push of a button, the self-priming flush pump rinses the bowl as the Macerator and high-capacity scavenger pump grind up waste and pump it out. Includes a heavy-duty push button and 1" discharge hose adapter. Easy-to-clean ceramic bowl.

FEATURES & BENEFITS

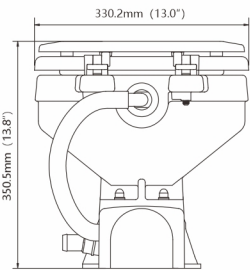
- Convenient push-button flush.
- Easy-to-clean ceramic bowl.
- Flexible impeller flush pump.
- Permanent magnet type motor, fully enclosed, with stainless steel shaft.
- Built-in back flow preventer.
- All corrosion resistant material for marine use.
- Wood seat with baked enamel finish for compact type only.
- Soft close seat for regular type only.



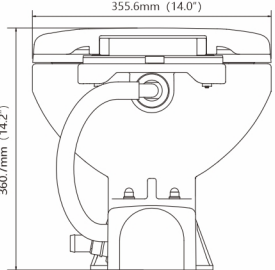
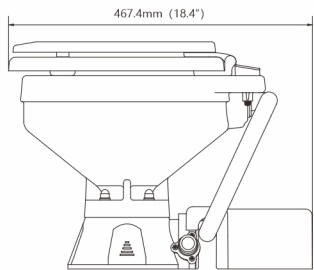
Color Box

Regular

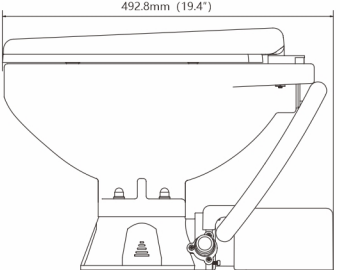
Switch Panel



Compact



Regular



Model	Color	Features	Voltage	Max Draw	Diameter	Size	Type	Material
SFMT1-01	White	Built In Macerator	12 V	20 A	3/4" Inlet 1" Discharge	Household	Electric Impeller	Ceramic bowl, wood seat with baked enamel finish
SFMT2-01	White	Built In Macerator	24 V	10 A	3/4" Inlet 1" Discharge	Household	Electric Impeller	Ceramic bowl, wood seat with baked enamel finish
SFMT1-01-R	White	Built In Macerator	12 V	20 A	3/4" Inlet 1" Discharge	Household	Electric Impeller	Ceramic bowl, soft close seat
SFMT2-01-R	White	Built In Macerator	24 V	10 A	3/4" Inlet 1" Discharge	Household	Electric Impeller	Ceramic bowl, soft close seat

NEW

Regular

Compact

SFMT1-02-R / SFMT2-02-R

SFMT1-02 / SFMT2-02

Electric Flush Pump
SFMT1-02 (12 V) / SFMT2-02 (24 V)

NEW

Regular

Compact

SFMTM-01-R

SFMTM-01

Hand Flush Pump
SFMTM-03

ELECTRIC CONVERSION MARINE TOILET

The Electric flush pump provides the convenience of an electric head without having to modify the platform or replace the head. The self-priming pump rinses the bowl while the waste pump macerates and evacuates the waste. Add the luxury of an electric head without the costly replacement and hassle by converting your existing toilet with an electric flush kit.

FEATURES & BENEFITS

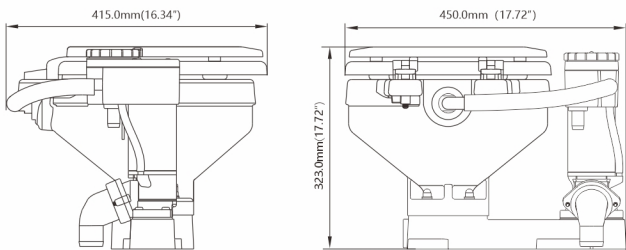
- Converts manual head to electric operation.
- Simple to operate.
- Suitable for use in above or below waterline installations.
- Built-in macerator with stainless steel chopper plate.
- Left and right-handed installations.
- Wood seat with baked enamel finish for compact type only.
- Soft close seat for regular type only.



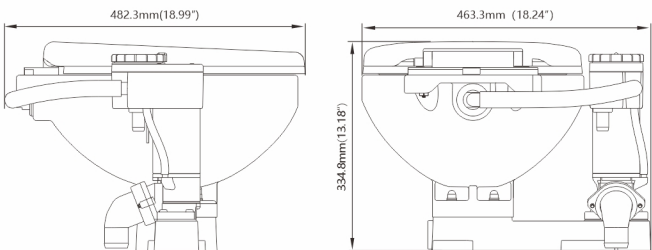
Color Box



Regular



Compact



Regular

Model	Color	Features	Max Draw	Diameter	Size	Type	Material
SFMT1-02	White	Built In Macerator	24 A	3/4" Inlet 1 1/2" Discharge	Compact	12 Volt Electric Impeller	Ceramic bowl, wood seat with baked enamel finish
SFMT2-02	White	Built In Macerator	13 A	3/4" Inlet 1 1/2" Discharge	Compact	24 Volt Electric Impeller	Ceramic bowl, wood seat with baked enamel finish
SFMT1-02-R	White	Built In Macerator	24 A	3/4" Inlet 1 1/2" Discharge	Regular	12 Volt Electric Impeller	Ceramic bowl, Soft close seat
SFMT2-02-R	White	Built In Macerator	13 A	3/4" Inlet 1 1/2" Discharge	Regular	24 Volt Electric Impeller	Ceramic bowl, Soft close seat

MANUALLY OPERATED MARINE TOILET

SEAFLO Manually Operated Marine Toilet can be installed in both power and sailing craft, either above or below the waterline, for use on sea, river, lake or canal. Your installation may discharge the waste either overboard (provided that your national and local regulations allow this), or into a treatment system or into an on-board holding tank (U.S.C.G. Marine Sanitation Devices Type I, II and III).

FEATURES & BENEFITS

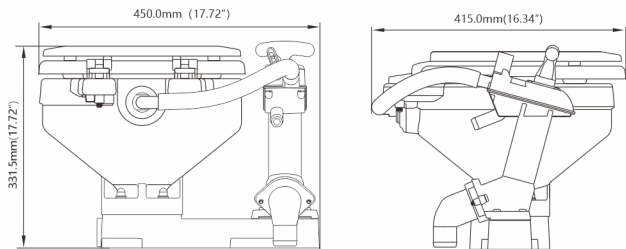
- Baked enamel seat & cover in compact or regular size.
- Twist "n" Lock handle eliminates leaks.
- Can be reassembled with the pump on the right or left side.
- Powerful self-priming pump for above or below waterline installation.
- Crevise free contours and smooth mouldings for added hygiene.
- Automatic vacuum breaker for easier pumping.
- Angled pump housing and long stroke for ease of installation.
- Wood seat with baked enamel finish for compact type only.
- Soft close seat for regular type only.



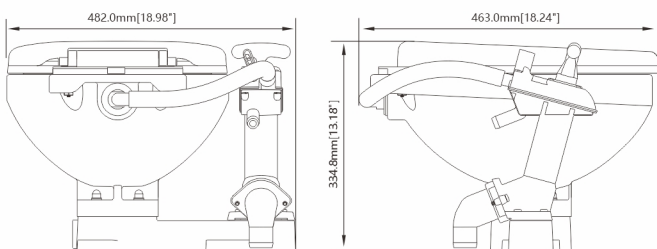
Color Box



Regular

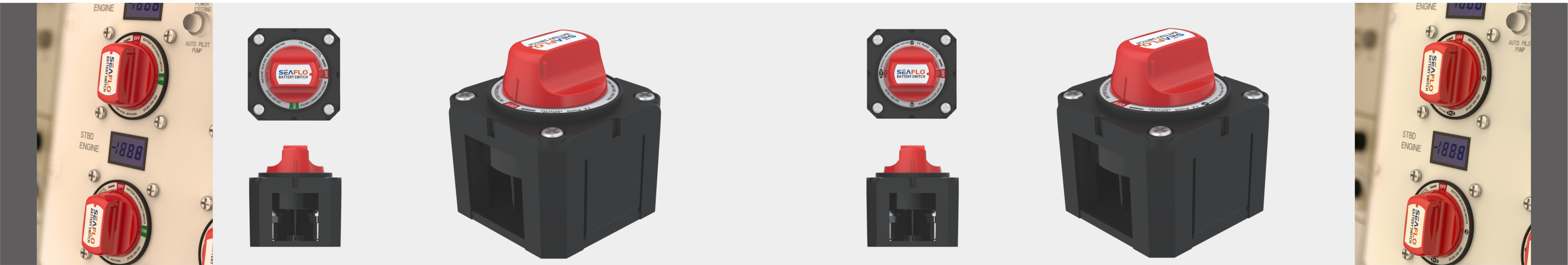


Compact



Regular

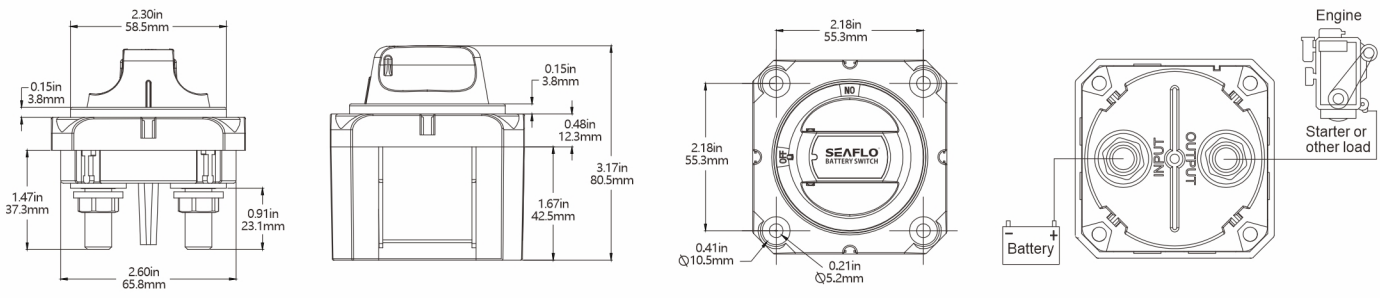
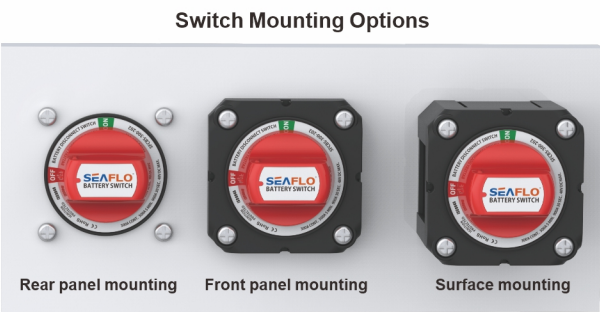
Model	Color	Diameter	Size	Type	Material
SFMTM-01	White	3/4" Inlet 1 1/2" Discharge	Compact	Manual Piston	Ceramic bowl, wood seat with baked enamel finish
SFMTM-01-R	White	3/4" Inlet 1 1/2" Discharge	Regular	Manual Piston	Ceramic bowl, Soft close seat



SINGLE CIRCUIT ON/OFF BATTERY DISCONNECT SWITCH

FEATURES

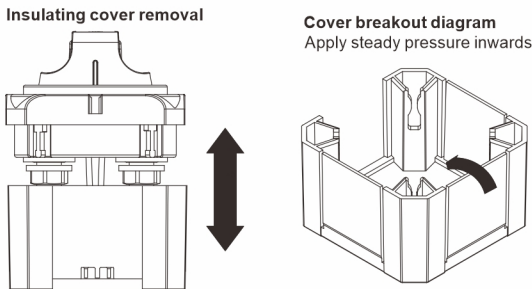
- Switches a single battery to a single load group
 - Tin-plated copper studs for maximum conductivity and corrosion resistance
 - Studs accept 3/8" (M10) ring terminals
 - One-piece terminal stud design never loosens over time
 - Isolating cover with three snap-off side pieces protects rear contacts and allows wire access in any direction
- Regulatory**
- CE, RoHS, ISO 8846
 - Meets all American Boat and Yacht Council (ABYC) requirements for battery switches
 - Meets UL 1500 and SAE J1171 external ignition protection requirements
 - IP66 – protected against powerful water jets



Specifications

Model	SFCBS-300-202
Cranking Rating: 30 sec.	900A DC
Intermittent Rating: 5 min.	500A DC
Continuous Rating	300A
DC Terminal Stud, Tin-Plated Copper	3/8" -16 (M10)
Torque 120 in-lb (13.56 N-m) Cable Size to Meet Ratings*	4/0 AWG (120 mm²)
Maximum Voltage Rating	48 Volts DC

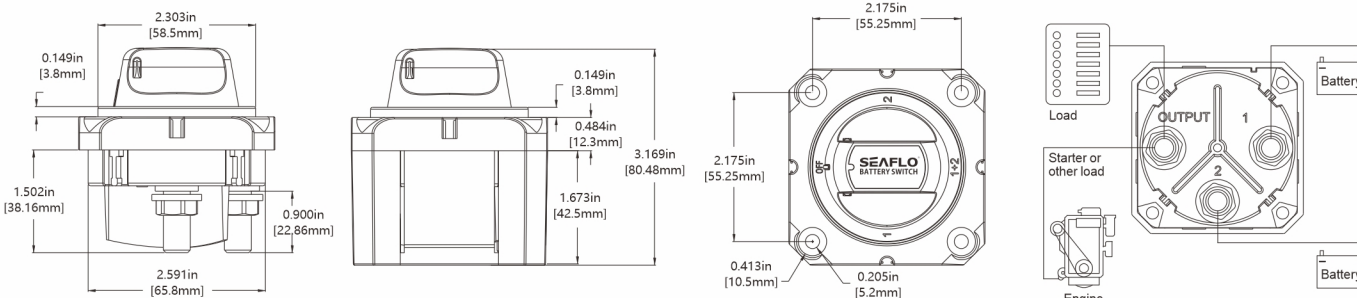
Switch Mounting Options: Surface mounting, Front panel mounting and Rear panel mounting



4 POSITION MINI SELECTOR BATTERY SWITCH

FEATURES

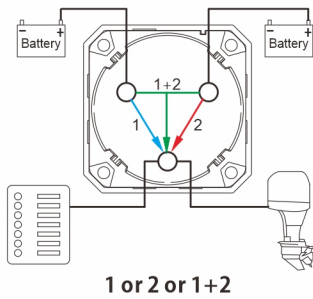
- Switches an isolated battery bank to all loads or combines battery banks to all loads
 - Tin-plated copper studs for maximum conductivity and corrosion resistance
 - Studs accept 3/8" (M10) ring terminals
 - One-piece terminal stud design never loosens over time
 - Isolating cover with three snap-off side pieces protects rear contacts and allows wire access in any direction
- Regulatory**
- CE, RoHS, ISO 8846
 - Meets all American Boat and Yacht Council (ABYC) requirements for battery switches
 - Meets UL 1500 and SAE J1171 external ignition protection requirements
 - IP66 – protected against powerful water jets

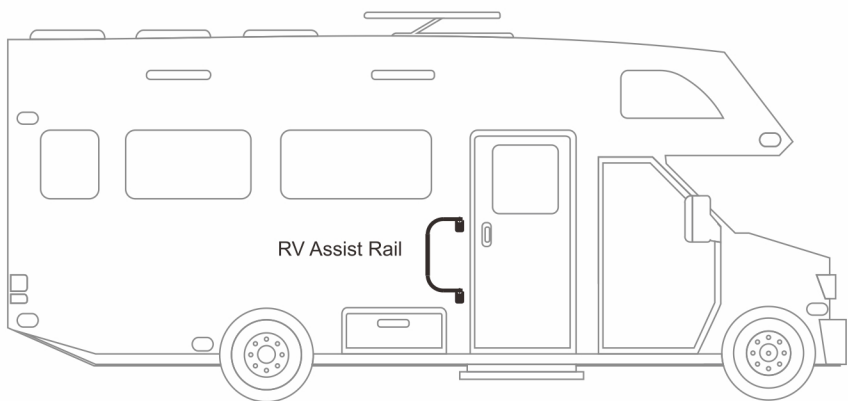


Specifications

Model	SFCBS-300-402
Cranking Rating: 30 sec.	900A DC
Intermittent Rating: 5 min.	500A DC
Continuous Rating	300A
DC Terminal Stud, Tin-Plated Copper	3/8" -16 (M10)
Torque 120 in-lb (13.56 N-m) Cable Size to Meet Ratings*	4/0 AWG (120 mm²)
Maximum Voltage Rating	32 Volts DC

Switch Mounting Options: Surface mounting, Front panel mounting and Rear panel mounting

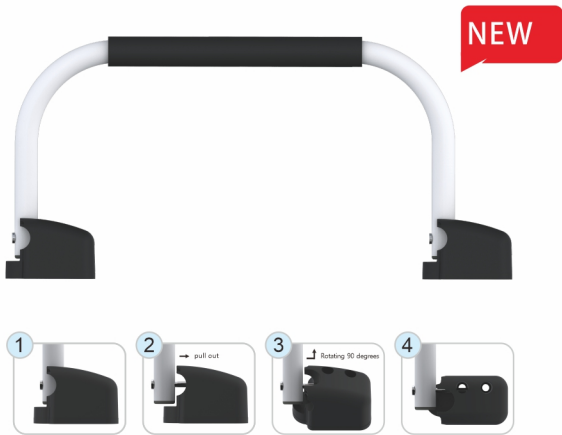
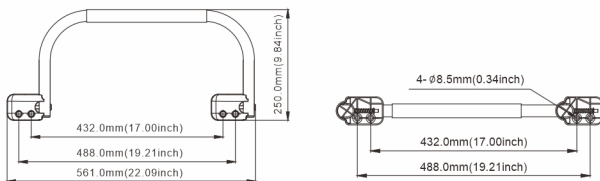




RV ASSIST RAIL MINI

FEATURES & BENEFITS

Provides a secure hold for entering and exiting your RV
Designed to help you keep and maintain your balance
Folds & locks to the side of your RV without tools
Locks open to make entering and exiting your RV easier
Available in white or black finishes with a black foam grip
Available in 22.05" and 26.73" length

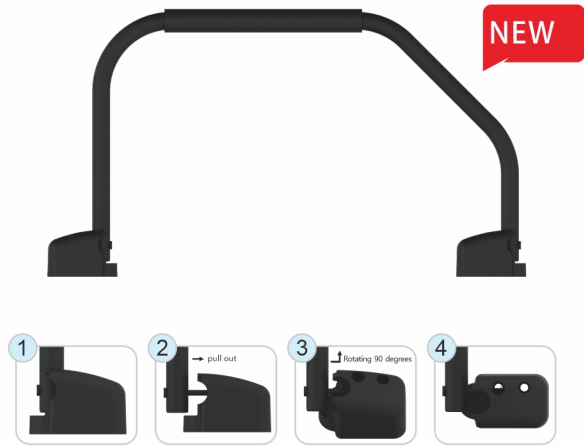
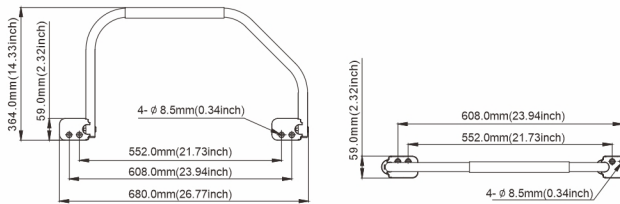


Model	Size	Color	Material
SFAR1-01	560mm*250mm*59.5mm	White	aluminum
SFAR2-01	560mm*250mm*59.5mm	Black	aluminum

RV ASSIST RAIL STANDARD

FEATURES & BENEFITS

Provides a secure hold for entering and exiting your RV
Designed to help you keep and maintain your balance
Folds & locks to the side of your RV without tools
Locks open to make entering and exiting your RV easier
Available in white or black finishes with a black foam grip
Available in 22.05" and 26.73" length



Model	Size	Color	Material
SFAR1-02	680mm*365mm*59.5mm	White	aluminum
SFAR2-02	680mm*365mm*59.5mm	Black	aluminum

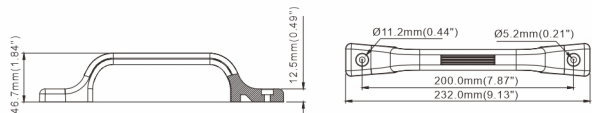
GRAB HANDLE

FEATURES & BENEFITS

SEAFLO Grab Handle designed for safety and convenience

Easy to install - Fits most RV's, Travel Trailer's, Fifth Wheel Trailers, Campers, Motor Home's, Cargo Trailers and Boats

Can be mounted vertically or horizontally



Model	Size	Color	Material
SFDK1-01	232mm*46.7mm*12.5mm	White	PA66
SFDK2-01	232mm*46.7mm*12.5mm	Black	PA66

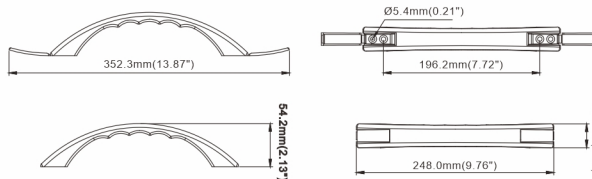
ARCH ASSIST HANDLE

FEATURES & BENEFITS

SEAFLO Arch Handle designed in clean styling, shaped to fit your hand for a secure grip

Easy to install - Fits most RV's, Travel Trailer's, Fifth Wheel Trailers, Campers, Motor Home's, Cargo Trailers and Boats

Made with All Weather Impact Resistant Polypropylene



Model	Size	Color	Material
SFDK1-02	248mm*30mm*54.2mm	White	PP
SFDK2-02	248mm*30mm*54.2mm	Black	PP

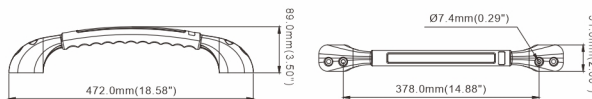
SOFT TOUCH RV HAND RAIL

FEATURES & BENEFITS

Provides traction and grip for your hand

Comfort grip for added stability and comfort

More user friendly than most manufacture hand rails



Model	Size	Material
SFDK1-03	472mm*51mm*89mm	ABS & TPE